

user manual



Joomla! Template



**Believe**

Believe v1.0 - Manual v1.0

**bonus**themes.com

EXTREME JOOMLA TEMPLATING



## Table of Contents

1. Introduction .....	3
2. General information.....	3
2.1 Required software.....	3
2.2 Browser compatibility .....	3
3. Template installation .....	4
4. Layout .....	5
4.1 Template map.....	6
4.2 CSS structure.....	7
4.3 Module Suffixes .....	8
5. Template setup.....	10
5.1 Logo setup.....	10
5.2 Banner setup .....	10
5.3 How to show/hide the BonusThemes logo.....	10
5.4 PNG fix .....	10
5.5 How to enable/disable CMenu .....	11
5.6 How to set the Joomla menu for CMenu.....	11
5.7 How to enable/disable the SEOCP feature .....	11
5.8 Hidden module positions .....	11
5.9 Custom menu styling.....	12
5.10 How to set the width of any position .....	12
5.11 How to control the template interfaces .....	12
5.12 Search module recommended set-up .....	13
Appendix A - How to install a template .....	14
Appendix B - How to setup a module .....	17





# 1. Introduction

Believe is the November 2008 Joomla! template from BonusThemes.com.

Believe is a template inspired by the need to express the esoteric energy hidden in us, the deep feeling of urgency for safety and understanding. Believe has a close relation to religious content, but it can also be very useful for presentation related categories, blogs or other types of content.

Believe introduces a new type of technology that features two interfaces. The first interface is for the front page and the second for the rest of the website's content. Webmasters can easily manage the interface simply by enabling/disabling a module in the position "front". Read section 5.11 for more details and examples.

Read the following sections to find detailed information and illustrated examples that explain the ways you can use the template.

## 2. General information

### 2.1 Required software

Believe works with Joomla! 1.5.x and it is recommended to use the latest version available.

Visit <http://www.joomla.org> to find which is the latest available version for Joomla!. If you are not sure which version you are using at the moment, login to the administrator control panel and locate the version number on the top right corner of the page.

### 2.2 Browser compatibility

Believe is compatible with:

- Firefox 3
- Safari 3
- MS Internet Explorer 7
- MS Internet Explorer 6





### 3. Template installation

To install the template you can use the Joomla! installation mechanism:

Extensions > Install/Uninstall

Alternatively, you may unpack the template in the /template directory.

To activate the template go to

Extensions > Template Manager

select the template and click the “Default” button.

Read Appendix A for illustrated examples on how to install and activate a template.





## 4. Layout

The layout of Believe provides 27 regular module positions and 5 invisible positions for supplementary services.

This template uses a collapsible module technology. That makes some positions disappear if there are no published modules in them. This feature gives you the capability to make arrangements for wider space in your pages.

On the top of its layout, Believe uses CMenu a menu script that takes input from a Joomla menu. You have the option of disabling this menu and have a module position in its place. This can be set from the Template Manager and the name of the position that replaces CMenu is “header”.

Believe features two interfaces, one designed for the front page and the other for all the rest of the website’s content. You can enable or disable the front page interface simply by publishing a module in the position “front”. You can use the internal Joomla! mechanism for displaying this module in specific menu items, and by this way control which menu items will operate as front pages. Read section 5.11 for more details and examples.





## 4.1 Template map



Map of regular module positions for the template Believe. The red area contains elements visible only from the front interface. Read section 5.11 to learn how to control the template interfaces.

Believe also supports 5 hidden positions for supplementary services. Read section 5.8 for more information.



## 4.2 CSS structure

Believe has two interfaces, one for the front page and one for the rest of the website's content.

The front interface is controlled by the `/templates/bt_believe/css/template_front.css` file.  
The content interface is controlled by the `/templates/bt_believe/template_content.css` file.  
These two interfaces have some common settings and these are controlled by the `/templates/bt_believe/template_common.css` file.

The file `/templates/bt_believe/css/layout.css` contains CSS definitions that control the layout.

The file `/templates/bt_believe/css/cmenu.css` contains CSS definitions that control the layout of CMenu, the script for the menu on the top area.

### Naming system for module positions:

The IDs of the `<div>` tags that wrap the template positions always start with "pos\_". For example the module position "user1" takes the id "pos\_user1".





## 4.3 Module Suffixes

There are 4 module styles (or module suffixes) that match the styling of the template.

### Sample title

Lorem ipsum dolor sit amet, elit  
maecenas dui potenti dolor, ligula  
ultrices, volutpat in dui est. Justo  
molestie nulla eget voluptatem  
suscipit, elementum sed a nam  
commodo in imperdiet, amet  
dictum ut, nec laoreet suspendisse,  
ante magna lobortis dolor.

#### mstyle1

(as it appears on the front interface)

### Sample title

Lorem ipsum dolor sit amet, elit  
maecenas dui potenti dolor, ligula  
ultrices, volutpat in dui est. Justo  
molestie nulla eget voluptatem  
suscipit, elementum sed a nam  
commodo in imperdiet, amet  
dictum ut, nec laoreet suspendisse,  
ante magna lobortis dolor.

#### mstyle1

(as it appears on the content interface)

### Sample title

Lorem ipsum dolor sit amet, elit  
maecenas dui potenti dolor, ligula  
ultrices, volutpat in dui est. Justo  
molestie nulla eget voluptatem  
suscipit, elementum sed a nam  
commodo in imperdiet, amet  
dictum ut, nec laoreet suspendisse,  
ante magna lobortis dolor.

#### mstyle2







### Sample title

Lorem ipsum dolor sit amet, elit maecenas dui potenti dolor, ligula ultricies, volutpat in dui est. Justo molestie nulla eget voluptatem suscipit, elementum sed a nam commodo in imperdiet, amet dictum ut, nec laoreet suspendisse, ante magna lobortis dolor.

mstyle3

### Sample title

Lorem ipsum dolor sit amet, elit maecenas dui potenti dolor, ligula ultricies, volutpat in dui est. Justo molestie nulla eget voluptatem suscipit, elementum sed a nam commodo in imperdiet, amet dictum ut, nec laoreet suspendisse, ante magna lobortis dolor.

mstyle4





## 5. Template setup

### 5.1 Logo setup

To setup your logo, publish a “Custom HTML” module with an uploaded image in any template position.

Example:

1. Upload your logo on your website
2. Create a new “Custom HTML” module that contains the URL of the image you just uploaded
3. Publish that module in a suitable position

For additional help with illustrated examples, visit <http://www.bonusthemes.com> and open the tutorial “How to upload your logo” from the tutorials section.

You can publish your logo in any position, but the recommended one for logos is “icon”. If you want to use that position for your logo, the maximum height should be 161 pixels. If you want to use a shorter logo with a vertical middle alignment you can either create an image of 161 pixel height which contains transparent pixels, or alternatively you can define the top margin of the HTML div “pos\_icon” from the CSS file `/templates/bt_believe/css/template_common.css`.

Example:

```
#pos_icon {  
    margin-top: 10px;  
}
```

### 5.2 Banner setup

To setup a banner, publish a banner module in any template position.

### 5.3 How to show/hide the BonusThemes logo

You can show or hide the BonusThemes logo from  
Extensions > Template Manger

### 5.4 PNG fix

MS Internet Explorer 5 and 6 have trouble rendering the alpha levels (transparencies) of PNG images. The template is equipped with a script that fixes this problem. To enable transparencies in PNG files for MS Internet Explorer 5 and 6, use the CSS class “pngfix”. In some cases images appear distorted. To avoid this distortion provide “width” and “height” attributes in your `<img>` HTML tags. Alternatively, you can try the CSS class “pngfix\_static”.

PNG fix’s website:

<http://www.twinhelix.com>





## 5.5 How to enable/disable CMenu

CMenu (Classic Menu) is the menu that appears on the top of the page.

If you want to use a module instead of CMenu you can disable it from  
Extensions > Template Manger

locate the option “Header Menu Type” and set it to “Position Header”. You can now publish your module in the position “header”.

## 5.6 How to set the Joomla menu for CMenu

CMenu by default shows the contents of the Joomla menu “topmenu”.

In order to change the content of CMenu, go to  
Extensions > Template Manager

and use the option “Header Menu Name”.

## 5.7 How to enable/disable the SEOCP feature

SEOCP (Search Engine Optimization Content Positioning) is a feature that controls the position of the main content of the pages.

When SEOCP is enabled the content is internally positioned on the top of the HTML code and this helps search engines find and analyze the content easier. When the page loads, a JavaScript script moves the content to the proper position so that the visual structures can display it in the way the human eye can understand better.

SEOCP needs JavaScript to work. This means that users with JavaScript disabled will not be able to read the content of the page.

By default, SEOCP is disabled. To enable SEOCP go to  
Extensions > Template Manager

and use the option “SEOCP”.

## 5.8 Hidden module positions

Believe includes 5 hidden positions for supplementary functionality. The names of these positions are “aux1”, “aux2”, “aux3”, “aux4”, “aux5”.





## 5.9 Custom menu styling

The Believe template has a default way of laying out menus. It uses a specific set of CSS rules that may not appear nice in exception cases. One such exception is a horizontal menu.

To make the template ignore the default layout for menus you can use a custom “Menu Class Suffix”. This should not be confused with “Module Class Suffix”. From the administrator’s control panel go to Extensions > Module Manager

open the menu module that needs to have a different layout, open the “Advanced Parameters” panel on the right side of the page and set the “Menu Class Suffix” to any value (type for example “mystyle”) and click the “Save” button.

## 5.10 How to set the width of any position

To set the width of a module position in the template go to Extensions > Template Manager

click the bt\_believe template and use the “Position widths” text box.

You can simply type the name of the template, a semi-colon and a width in pixels. Each line should have one setting.

Example:

```
left: 160  
right: 200
```

To set the width of the main body use the keyword: “mainbody”.

Example:

```
mainbody: 700
```

## 5.11 How to control the template interfaces

As explained in previous sections, Believe has two interfaces, one designed for the front page and one for the rest of the website’s content.

To enable or disable the front interface you simply publish a module in the position “front” in the menu items of your choice.

The interface for front pages also features a menu that is controlled by the template manager.

Here is an example that demonstrates the set up of the front page:

1. Upload your logo on your website (\*).
2. Create a new custom module: Go to the administrators control panel. From the menu “Extensions” select “Module Manager”. From the buttons on the top right corner of the page click the “New” button. From the list, click on the “Custom HTML” option.





3. Set the “Show Title” option to No, “Enabled” to Yes, “Position” to “front”.
4. Locate the text area “Custom Output” and use the buttons to insert the image you uploaded in step 1 (\*).
5. Locate the group box “Menu Assignment”, click the “Select Menu Item(s) from the List” and then select the menu items you want to show the front page interface. To select multiple items hold down the “Ctrl” button of your keyboard and left click with your mouse.
6. Click the “Save” button on the top right corner of the page.

This concludes the creation of a custom HTML module.

Under the position “front” you also have the option to use an additional menu. You can enable or disable this menu, or select which menu it uses for input. To control these options go to the Template Manager from the administrator’s control panel, click the “bt\_believe” template and use the options “Front Menu Visibility” and “Front menu name” options.

(\*) For additional help with illustrated examples, visit <http://www.bonusthemes.com> and open the tutorial “How to upload your logo” from the tutorials section.

## 5.12 Search module recommended set-up

The recommended position for publishing the search module is “search”.

You should also enable the “Search button” and the “Search button as image” options. In order to do that go to the Module manager, select the search module and locate these options on the “Parameters” panel.

Read Appendix B for illustrated examples on how to set up modules.





## Appendix A - How to install a template

To install a template in Joomla! 1.5.x follow the next 6 steps:

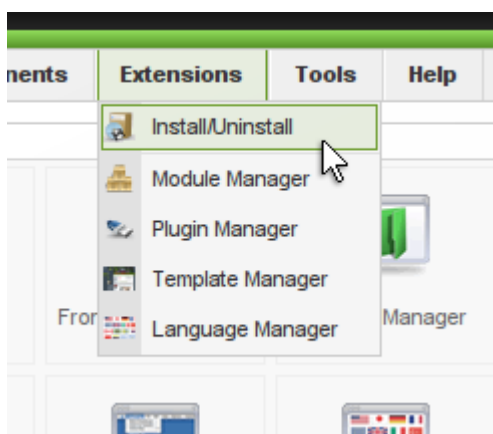
### Step 1

Get into the administrator's control panel with your browser.

The URL usually looks like

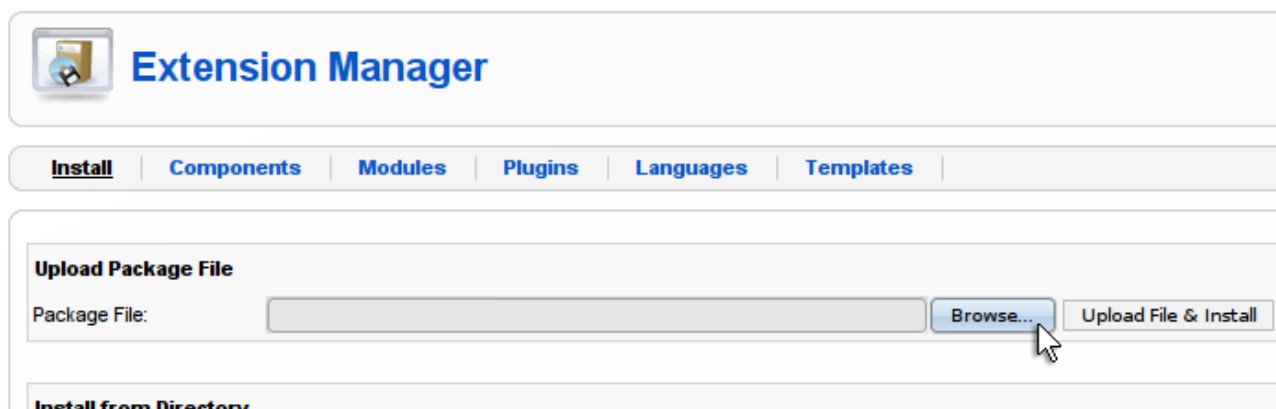
<http://www.example.com/administrator/>

### Step 2



Go to the menu *Extensions > Install/Uninstall*

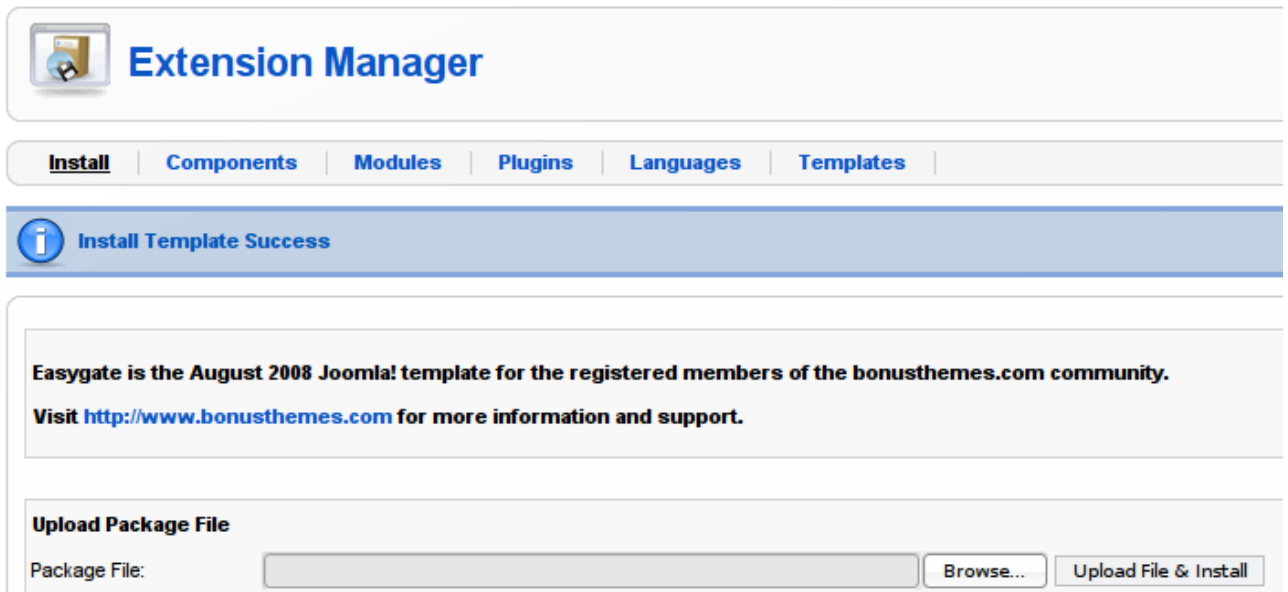
### Step 3



Click the *Browse* button to find the archive of the template, and then click *Upload File & Install* to perform the installation procedure.

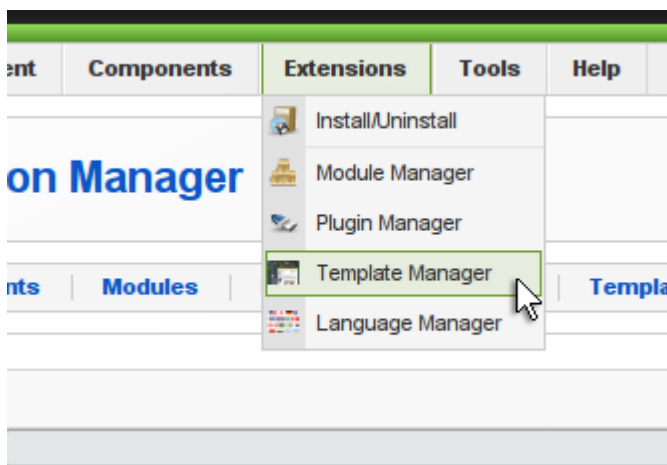


#### Step 4



If the installation was successful you will be able to see a success message like the one in the image.

#### Step 5



The next thing to do is to activate the template.

Go to *Extensions > Template Manager*



## Step 6

The screenshot shows the Joomla! Template Manager interface. At the top, there are tabs for Site, Menus, Content, Components, Extensions, Tools, and Help. Below the tabs is a 'Template Manager' header with a 'Preview' button and a 'Logout' button. A yellow circle labeled '1' highlights the 'bt\_easygate' template name in the list. Another yellow circle labeled '2' highlights the 'Default' button in the top right corner of the interface.

#	Template Name	Default	Assigned	Version	Date	Author
1	beez			1.0.0	19 February 2007	Angie Radtke/Robert Deutz
2	bt_easygate			1.0	August 2008	BonusThemes.com
3	JA_Purity	★		1.2.0	12/26/07	JoomlaArt.com
4	rhuk_milkyway			1.0.2	11/20/06	Andy Miller

Display # 20

From the *Template Manager* page click on the template name you just installed and then click the *Default* button to make that template the default one.





## Appendix B - How to setup a module

To setup a module in Joomla! 1.5.x follow the next 4 steps:

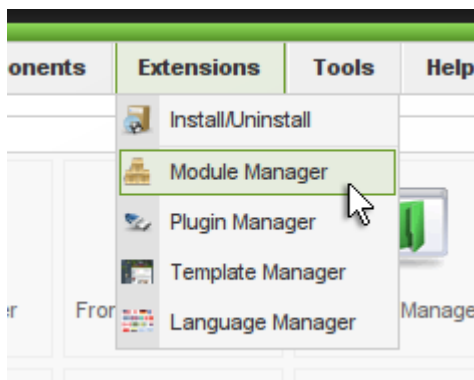
### Step 1

Get into the administrator's control panel with your browser.

The URL usually looks like

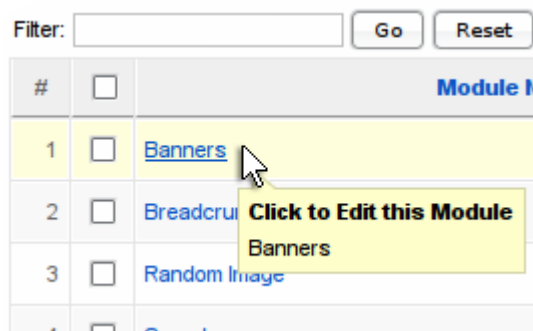
<http://www.example.com/administrator/>

### Step 2



Go to the menu *Extensions > Module Manager*

### Step 3



Find the module you want to edit and click it.

Note: If you cannot find your module perhaps there are too many modules split in pages. Go through the pages to find your module, or use the filters to limit the list of modules on your screen.

### Step 4



Now you are in the page that controls the module.

From the Details area you can control many features including:

- Set the title of the module
- Show or hide the title
- Publish or unpublish the module by checking the Enabled attribute
- Set the position of the module

From the Parameters area you can control other features including the ability to

- Set the Module Class Suffix

To save your changes click the **Save** button in the top right corner.





**bonus**themes.com

E X T R E M E   J O O M L A   T E M P L A T I N G

- Graphics: Panos Gazepidis - Mediagrafix - <http://www.mediagrafix.gr>
- Programming: Alex Stylianos - Creative Pulse - <http://www.creativepulse.eu>

---

Distribution - Support: <http://www.bonusthemes.com>