

user manual



Joomla!™
Template

 **exChange**

Exchange v1.0 - Manual v1.0

bonusthemes.com

EXTREME JOOMLA TEMPLATING

Table of Contents

1. Introduction	3
2. General information	3
2.1. Required software	3
2.2. Browser compatibility	3
3. Template installation	4
4. Layout	5
4.1. Template map	6
4.2. CSS structure	7
4.3. Module Suffixes	8
5. Template setup	11
5.1. Logo setup	11
5.2. Banner setup	11
5.3. How to show/hide the BonusThemes logo	11
5.4. Exporting PNG slices	11
5.5. How to enable/disable CMenu	12
5.6. How to set the Joomla menu for CMenu	12
5.7. How to enable/disable the SEOCP feature	12
5.8. Hidden module positions	12
5.9. Custom menu styling	13
5.10. How to set the width of any position	13
5.11. How to connect CMenu with the Joomla! content	14
5.12. How to connect CMenu with VirtueMart 1.1	15
5.13. How to set up the article date style	16
5.14. How to set up the styling of the first word of the module titles	16
5.15. How to set up the search module	17
5.16. How to set up the login module	17
5.17. Main body wrapper layout	17
5.18. How to set up the photo gallery module in the top positions	18
Appendix A – How to install a template	19
Appendix B – How to setup a module	22
Appendix C - CMenu to Joomla! content link reference	24
C.1. articles	24
C.2. latest	25
C.3. random	26
C.4. selected	27
Appendix D - CMenu to VirtueMart 1.1 link reference	28
D.1. category	28
D.2. subcategory	29
D.3. featured	30
D.4. latest	30
D.5. random	31
D.6. selected	31
D.7. topten	32

1. Introduction

Exchange is the February 2010 Joomla! template from BonusThemes.com.

Exchange is a lucid business template. Clear colors and a fine design bring a great visual experience to your website visitors. Exchange is the ideal choice for a business presentation, as well as a business blog or portal. Amongst other standard technologies usually featured by the BonusThemes.com templates, Exchange also supports a great looking Photo Spot viewer for your content presentation.

The template features a 3 column layout, plenty of module positions, a menu with built-in support for VirtueMart 1.1, Joomla! articles, native or blog styled date tag for articles, content optimization settings for search engines and lots of configuration options for demanding webmasters.

Read the following sections to find detailed information and illustrated examples that explain the ways you can use the template.

2. General information

2.1. Required software

Exchange works with Joomla! 1.5.x and it is recommended to use the latest version available.

Visit <http://www.joomla.org> to find which is the latest available version for Joomla!. If you are not sure which version you are using at the moment, login to the administrator control panel and locate the version number on the top right corner of the page.

2.2. Browser compatibility

Exchange is compatible with:

- Firefox 3.6
- Chrome 5
- Safari 5
- MS Internet Explorer 8
- MS Internet Explorer 7

3. *Template installation*

To install the template you can use the Joomla! installation mechanism:

`Extensions > Install/Uninstall`

Alternatively, you may unpack the template in the /template directory.

To activate the template go to

`Extensions > Template Manager`

select the template and click the “Default” button.

Read Appendix A for illustrated examples on how to install and activate a template.

4. Layout

The layout of Exchange provides 29 regular module positions and 5 invisible positions for supplementary services.

Exchange implements a technology that makes it really easy to set the width of any position or the main body. Read section 5.10 for more information.

This template uses a collapsible module technology. That makes some positions disappear if there are no published modules in them. This feature gives you the capability to make arrangements for wider space in your pages.

On the top of its layout, Exchange uses CMenu, a menu script that uses a regular Joomla menu as a data source. You have the option of disabling this menu and have a regular module position in its place. This can be set from the Template Manager and the name of the position that replaces CMenu is "header". Read sections 5.5 and 5.6 for more information.

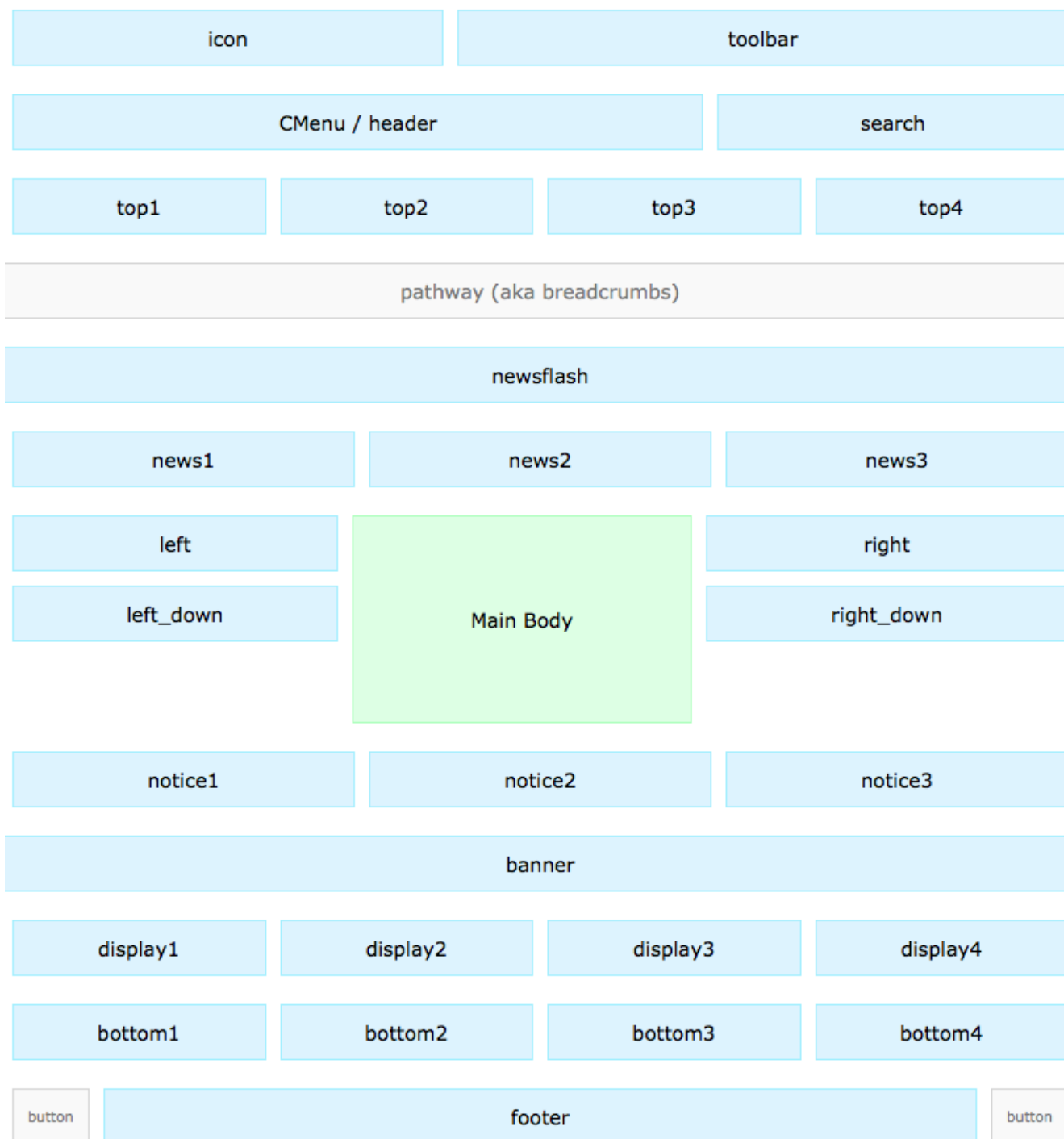
CMenu can also be easily connected with articles from the Joomla! content and VirtueMart's products and categories. Read section 5.11 and Appendix C and for more details on the connection to Joomla! content and section 5.12 and Appendix D for the connection to VirtueMart 1.1.

With this template you have the option to change the way dates for articles appear and give them blog styled date tags. Read section 5.13 for more information.

Exchange by default differentiates the styling of the first word of your module titles. Read section 5.14 to see how to control this feature.

Exchange supports a the photo gallery component Photo Spot with a viewer plugin that matches the template's layout. Read section 5.17 for more information.

4.1. Template map



Map of regular module positions for the template Exchange.

Exchange also supports 5 hidden positions for supplementary services. Read section 5.8 for more information.

An alternative way to see this map on your website is to use the URI parameter `tp=1`. For example, if your website is "example.com" you can see the template positions by typing <http://www.example.com/?tp=1>

4.2. CSS structure

Exchange uses the main Joomla template CSS file for typography and other general styling. That main file is `/templates/bt_exchange/css/template.css`

The file `/templates/bt_exchange/css/layout.css` contains CSS definitions that control the layout.

The file `/templates/bt_exchange/css/cmenu.css` contains CSS definitions that control the layout of CMenu, the script for the menu on the top area.

Naming system for module positions:

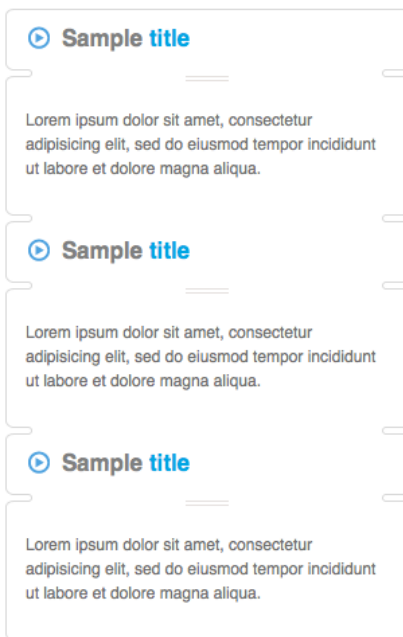
The IDs of the `<div>` tags that wrap the template positions always start with "pos_". For example the module position "left" takes the id "pos_left".

4.3. Module Suffixes

There are 6 module styles (or module suffixes) that match the styling of the template.

mstyle0

Adds a gap under the module.



mstyle1u (*)

Use it for positions with a white background

mstyle1 (*)

Use it for positions with a white background

mstyle1d (*)

Use it for positions with a white background



mstyle1ud (*)

Use it for positions with a white background

(*) There are four variations of mstyle1. The suffix “u” stands for “up” and “d” for “down”. You can use these suffixes to make a group of modules appear as a unified module.



mstyle2u (*)

Use it for positions with a white background

mstyle2 (*)

Use it for positions with a white background

mstyle2d (*)

Use it for positions with a white background

mstyle2ud (*)

Use it for positions with a white background

(*) There are four variations of mstyle2. The suffix “u” stands for “up” and “d” for “down”. You can use these suffixes to make a group of modules appear as a unified module.

**mstyle3u (*)**

Use it for positions with a white background

mstyle3 (*)

Use it for positions with a white background

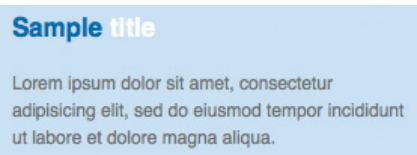
mstyle3d (*)

Use it for positions with a white background

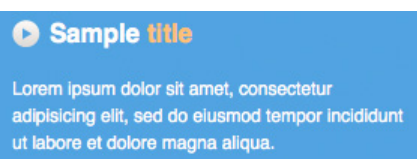
mstyle3ud (*)

Use it for positions with a white background

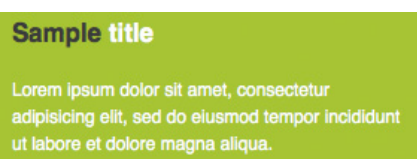
(*) There are four variations of mstyle3. The suffix “u” stands for “up” and “d” for “down”. You can use these suffixes to make a group of modules appear as a unified module.

**mstyle4**

Use it for modules in positions “display1”, “display2”, “display3” and “display4”

**mstyle5**

Use it for modules in positions “bottom1”, “bottom2”, “bottom3” and “bottom4”

**mstyle6**

Use it for modules in positions “top1”, “top2”, “top3” and “top4”

5. Template setup

5.1. Logo setup

To setup your logo, publish a “Custom HTML” module with an uploaded image in any template position.

Example:

1. Upload your logo on your website
2. Create a new “Custom HTML” module that contains the URL of the image you just uploaded
3. Publish that module in a suitable position

For additional help with illustrated examples, visit <http://www.bonusthemes.com> and open the tutorial “How to upload your logo” from the tutorials section.

You can publish your logo in any position, but the recommended one for logos is “icon”. The recommended height for the logo in this template is 70 pixels.

5.2. Banner setup

To setup a banner, publish a banner module in any template position.

5.3. How to show/hide the BonusThemes logo

You can show or hide the BonusThemes logo from

`Extensions > Template Manger`

5.4. Exporting PNG slices

If you ever need to customize the images from the PSD sources with Adobe Photoshop you may notice that the produced images have slightly different colors than the ones you would expect.

This happens when you use the utility File > Save for Web & Devices. The problem is caused from the difference of the color profiles between Photoshop, your operating system (MS Windows, Mac OS X etc) and the browser. Fortunately, there is a color profile used by most of the browsers called sRGB (standard RGB).

In order to export your slices with the correct colors remember to click the “Convert to sRGB” checkbox from the “Save for Web & Devices” utility from Photoshop.

5.5. How to enable/disable CMenu

CMenu (Classic Menu) is the menu that appears on the top of the page.

If you want to use a module instead of CMenu you can disable it from

[Extensions](#) > [Template Manger](#)

locate the option “Header Menu Type” and set it to “Position Header”. You can now publish your module in the position “header”.

5.6. How to set the Joomla menu for CMenu

CMenu by default shows the contents of the Joomla menu “topmenu”.

In order to change the source of CMenu, go to

[Extensions](#) > [Template Manager](#)

and use the option “Header Menu Name”.

5.7. How to enable/disable the SEOCP feature

SEOCP (Search Engine Optimization Content Positioning) is a feature that controls the position of the main content of the pages.

When SEOCP is enabled the content is internally positioned on the top of the HTML code and this helps search engines find and analyze the content easier. When the page loads, a JavaScript script moves the content to the proper position so that the visual structures can display it in the way the human eye can understand better.

SEOCP needs JavaScript to work. This means that users with JavaScript disabled will not be able to read the content of the page.

By default, SEOCP is disabled. To enable SEOCP go to

[Extensions](#) > [Template Manager](#)

and use the option “SEOCP”.

5.8. Hidden module positions

Exchange features 5 hidden positions for supplementary functionality. The names of these positions are “aux1”, “aux2”, “aux3”, “aux4”, “aux5”.

The IDs of the container HTML elements for these positions are “pos_aux1”, “pos_aux2”, “pos_aux3”, “pos_aux4” and “pos_aux5” respectively.

5.9. Custom menu styling

The Exchange template has a default way of laying out menus. It uses a specific set of CSS rules that may not appear nice in exception cases. One such exception is a horizontal menu.

To make the template ignore the default layout for menus you can use a custom “Menu Class Suffix”. This should not be confused with “Module Class Suffix”. From the administrator’s control panel go to

`Extensions > Module Manager`

open the menu module that needs to have a different layout, open the “Advanced Parameters” panel on the right side of the page and set the “Menu Class Suffix” to any value (type for example “mystyle”) and click the “Save” button.

Exchange also contains a secondary styling for menus. To use it follow the instructions above and type “menu1” in the “Menu Class Suffix” input box.

5.10. How to set the width of any position

To set the width of a module position in the template go to

`Extensions > Template Manager`

click the `bt_exchange` template and use the “Position widths” text box.

You can simply type the name of the template, a colon (:) and a width in pixels. Each line should have one setting.

Example:

```
left: 160
```

```
right: 200
```

To set the width of the main body use the keyword: “mainbody”.

Example:

```
mainbody: 700
```

5.11. How to connect CMenu with the Joomla! content

CMenu is the menu that appears by default as the main template menu. As explained in previous sections its data source is a regular Joomla! menu of your choice.

The connection of CMenu with the Joomla! content is a very simple task. All you have to do is create an "External Link" menu item and use the "Link" text box to define the type of connection you want. The system will convert your link to the Joomla! content if it starts with ":cnt:". After that keyword, you should enter a type of connection and optional parameters.



Here is an example of what the Link should look like if you want to show links from all the Joomla! content under a menu item:

```
:cnt:articles
```

Now let's narrow the results to show links of articles in a specified category. Let's pick the category with ID 1 for our example.

```
:cnt:articles:cat=1
```

Depending on the command you use ("articles" in this case) you have optional parameters to filter your connection. For example, you may want to show a maximum of 20 links. To do that, you should use the parameter "max":

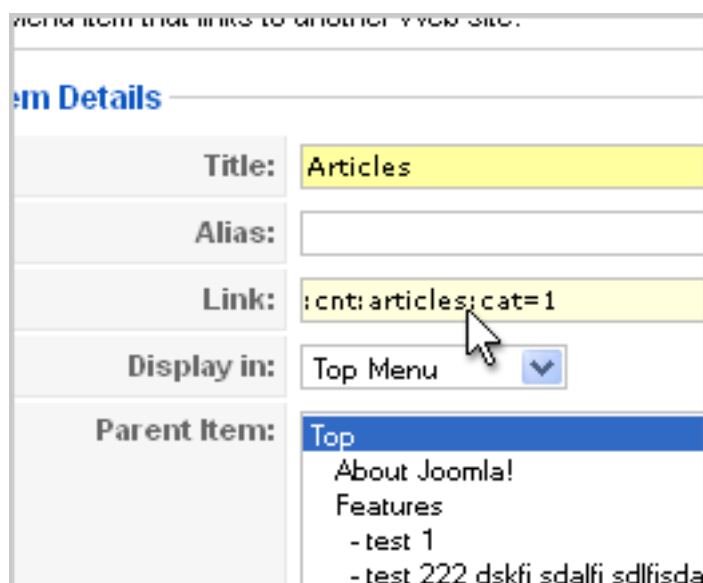
```
:cnt:articles:cat=1:max=20
```

The colon (:) symbol is a delimiter for your parameters. If you want to use parameters, you should separate them with a colon (:).

Here is a list with all the available commands:

- articles: Displays article links in the order set from the control panel.
- latest: Displays article links putting the newer ones first.
- random: Displays article links in random order.
- selected: Displays selected article links.

Read Appendix C for a detailed reference on the commands and their parameters.



Menu Item Details	
Title:	Articles
Alias:	
Link:	:cnt:articles:cat=1
Display in:	Top Menu
Parent Item:	<ul style="list-style-type: none"> Top About Joomla! Features - test 1 - test 222 dskfi sdalfi sdlfisd

5.12. How to connect CMenu with VirtueMart 1.1

CMenu may also use VirtueMart as a data source for menu items.

The connection of CMenu with VirtueMart 1.1 is as easy as the connection to the Joomla! content explained in the previous section. All you have to do is create an “External Link” menu item and use the “Link” text box to define the type of connection you want. The system will convert your link to VirtueMart data if it starts with “:vm:”. After that keyword, you should enter a type of connection and optional parameters.

Here is an example of what the Link should look like if you want to show all the VirtueMart categories under a menu item:

```
:vm:subcategory
```

And here is a more complex example that connects a menu item with the sub-categories of the category 5.

```
:vm:subcategory:id=5
```

Depending on the command you use (“category” in this case) you have optional parameters to filter your connection. For example, you may want to show only one level of sub-categories. To do that, you should use the parameter “depth”:

```
:vm:subcategory:id=5:depth=1
```

The colon (:) symbol is a delimiter for your parameters. If you want to use parameters, you should separate them with a colon (:).

Here is a list with all the available commands:

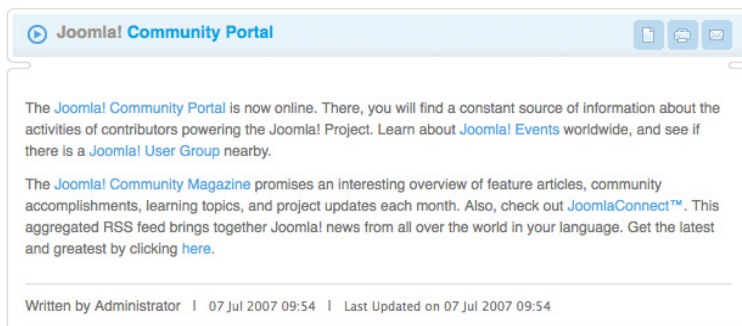
- category: Displays VirtueMart product categories and their sub-categories.
- subcategory: Displays VirtueMart sub-categories.
- featured: Displays featured products.
- latest: Displays latest products.
- random: Displays random products.
- selected: Displays selected products.
- topten: Displays best selling products.

Read Appendix D for a detailed reference on the commands and their parameters.

5.13. How to set up the article date style

Exchange provides two ways to display dates for articles:

Regular



Blog



To set the article date style of the template go to

`Extensions > Template Manager`

click the `bt_exchange` template and use the "Article Date Style" drop down box.

5.14. How to set up the styling of the first word of the module titles

With the Exchange template you can make the template set a differentiated styling for the first word of a module's title.

To control this functionality go to

`Extensions > Template Manager`

click the `bt_exchange` template and use the "Module word" buttons to enable or disable it.

5.15. How to set up the search module

The search module in Exchange can be placed anywhere. If you want your website to have a styling like the one in the demo put it in the position “search” and set its module suffix to “template”.

How to make the search module work with VirtueMart:

With Exchange, you can make the regular search module from Joomla! work as if it was a VirtueMart search module. All you have to do is publish it in the position “search” and set its module suffix to “virtuemart”.

5.16. How to set up the login module

The login module in Exchange can be placed anywhere. If you want your website to have a styling like the one in the demo put it in the position “toolbar” and set its module suffix to “template”.

5.17. Main body wrapper layout

Exchange has its own wrapper layout for displaying content. This layout is mainly used in articles, but it can also be used as a background for the main body of the template (i.e. the area that components are displayed).

The template uses this special wrapper by default and it offers you an easy way to enable or disable it. To do that, go to **Extensions > Template Manager** and select **bt_exchange**. The option “Main body layout” allows you to set the way the template handles the wrapper layout. It can use the “Joomla! default” way (disables the wrapper layout) or the “Template styled” (enables the wrapper layout).

Whatever your choice is, the next setting “Main body exceptions” allows you to add exceptions to the rule. In this input box you can write names of components, or Itemid numbers which will inverse the general rule you set from the previous setting.

Example 1:

Set the “Main body layout” option to “Joomla! default”, and in the “Main body exceptions” input box write:

```
com_polls
com_weblinks
```

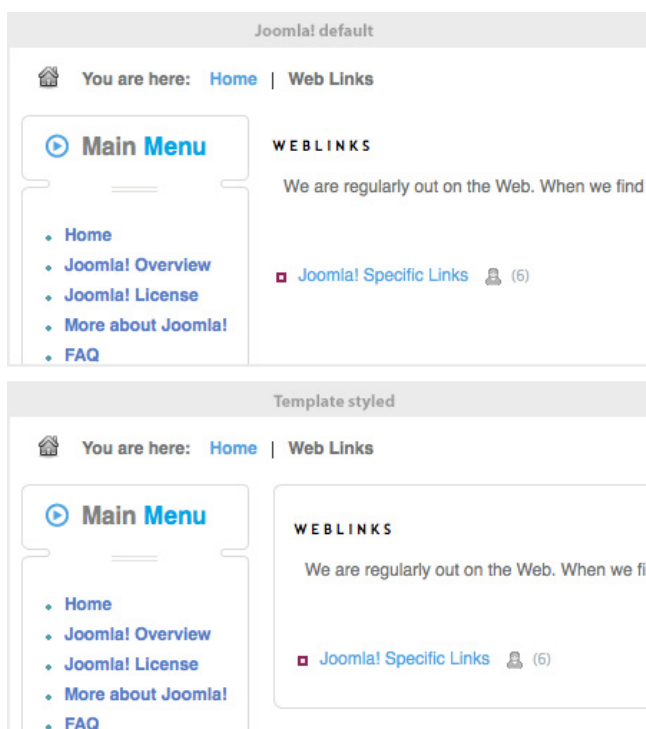
The template will use the wrapper layout only for the two components you set (“polls” and “weblinks”).

Example 2:

Set the “Main body layout” option to “Template styling”, and in the “Main body exceptions” input box write:

```
com_polls
com_weblinks
```

The template will use the wrapper layout to all the components except the ones you set (“polls” and



“weblinks”).

Example 3:

Set the “Main body layout” option to “Joomla! default”, and in the “Main body exceptions” input box write:

12

34

The template will use the wrapper layout only for the pages with Itemid 12 and 34 (*).

Example 4:

Set the “Main body layout” option to “Template styling”, and in the “Main body exceptions” input box write:

12

34

The template will use the wrapper layout to all the components except the ones with Itemid 12 and 34 (*).

(*) Itemid (item id) is a number that identifies a menu item. Use the menu manager to create menus and menu items. Once you create one, you can find its ID number from the list of the items in a menu.

5.18. How to set up the photo gallery module in the top positions

Exchange supports a gallery module for its top positions. The module works with the photo gallery component “Photo Spot”. Photo Spot is a component that gives you an impressive flexibility in the way you pick images and the way you present them.

To re-create the gallery in the demo of Exchange follow these instructions:

Download the required extensions:

Visit <http://www.bonusthemes.com>, go to the “Downloads Area” and select the “Joomla! Addons” section. Download the following:

- Photo Spot Component v1.0.1 for Joomla! 1.5
- Photo Spot Module v1.0 for Joomla! 1.5
- Photo Spot Viewer - SlideOne TNA v1.0 for Joomla! 1.5

Installation steps:

1. Install the Photo Spot component
2. Install the Photo Spot module
3. Install the viewer plugin SlideOne TNA
4. Go to **Extensions > Plugin Manager** and enable the “Slide One TNA” plugin
5. Go to **Components > Photo Spot** and create a new gallery. For your new gallery use a convenient data source, for example Directory (picks images from a directory). Ensure you use “Slide One TNA” as your viewer. Remember the name you used for your new gallery.
6. Go to **Extensions > Module Manager** and publish the module mod_photospot anywhere in the template. If you want to make it exactly like the demo, publish it in “top1”. In the parameter “Gallery name” use the name of your new gallery from the previous step.

You may want to go back to the settings in the Photo Spot component to fine tune the data source and viewer parameters of your new gallery.

You can find more documentation about Photo Spot at

<http://www.creativepulse.eu/products/photospot/docs/>

Appendix A – How to install a template

To install a template in Joomla! 1.5.x follow the next 6 steps:

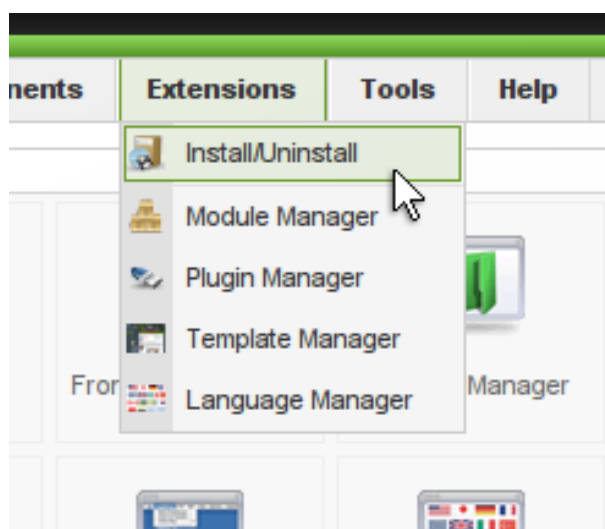
Step 1

Get into the administrator's control panel with your browser.

The URL usually looks like

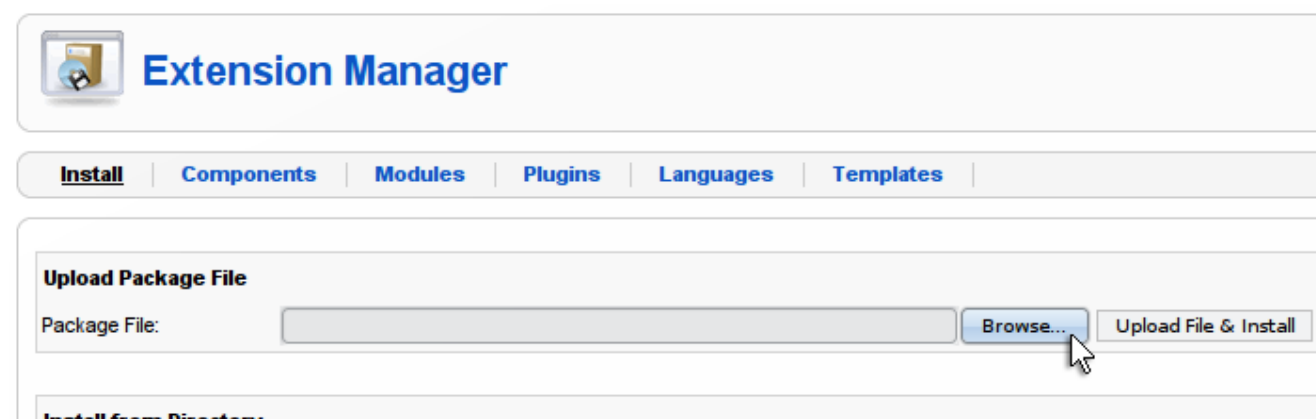
<http://www.example.com/administrator/>

Step 2



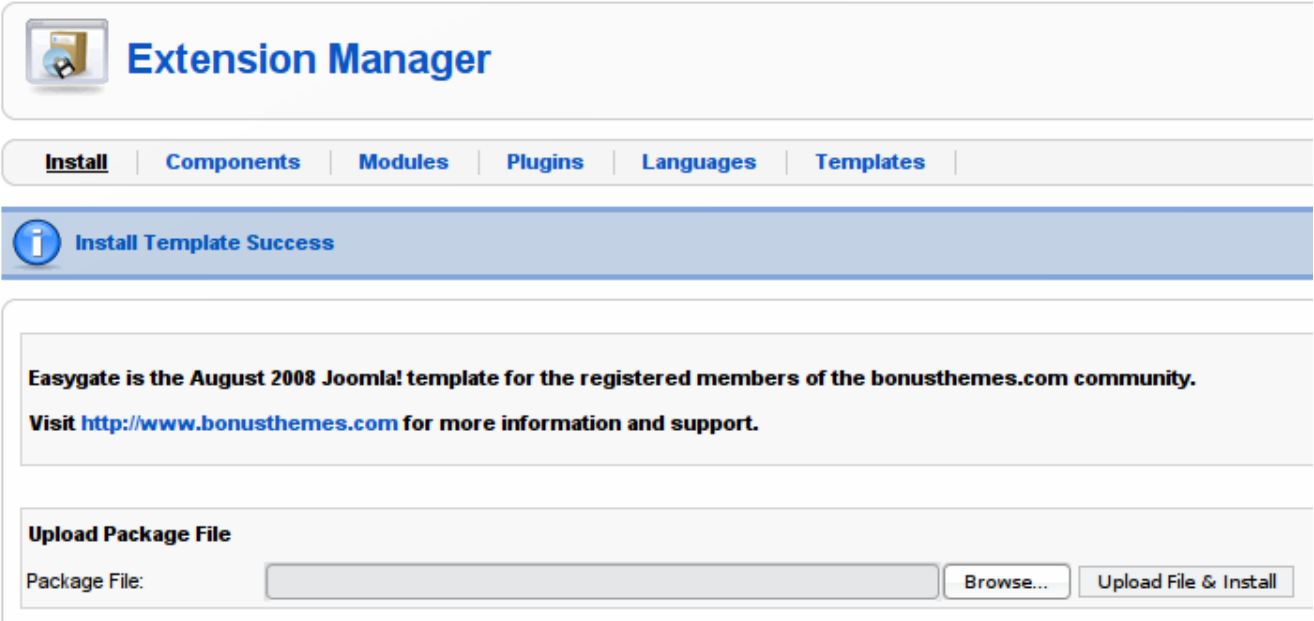
Go to the menu `Extensions > Install/Uninstall`

Step 3



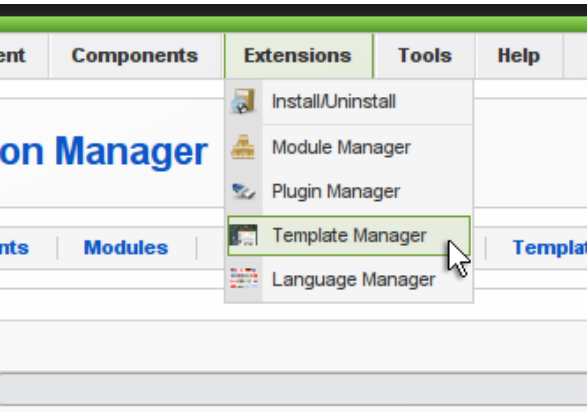
Click the Browse button to find the archive of the template, and then click Upload File & Install to perform the installation procedure.

Step 4



If the installation was successful you will be able to see a success message like the one in the image.

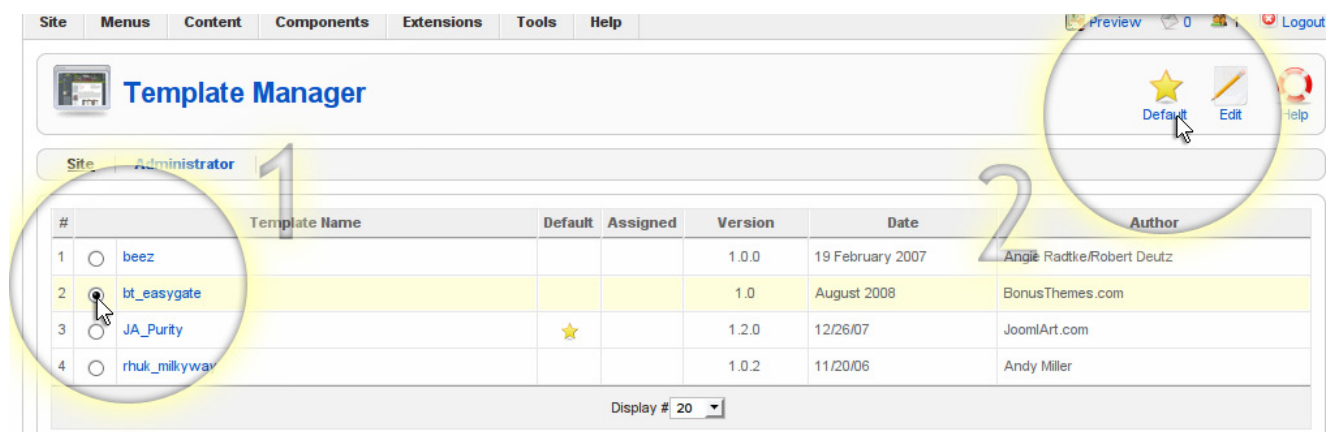
Step 5



The next thing to do is to activate the template.

Go to `Extensions > Template Manager`

Step 6



#	Template Name	Default	Assigned	Version	Date	Author
1	beez			1.0.0	19 February 2007	Angie Radtke/Robert Deutz
2	bt_easygate			1.0	August 2008	BonusThemes.com
3	JA_Purity	★		1.2.0	12/26/07	Joomla!Art.com
4	rhuk_milkyway			1.0.2	11/20/06	Andy Miller

Display # 20

From the Template Manager page click on the template name you just installed and then click the Default button to make that template the default one.

Appendix B – How to setup a module

To setup a module in Joomla! 1.5.x follow the next 4 steps:

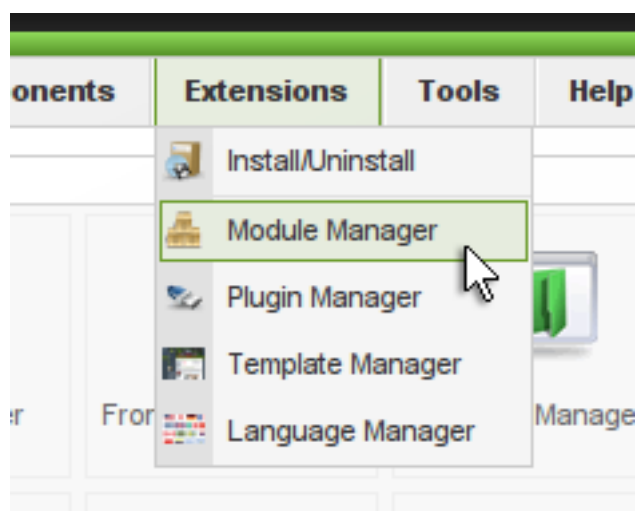
Step 1

Get into the administrator's control panel with your browser.

The URL usually looks like

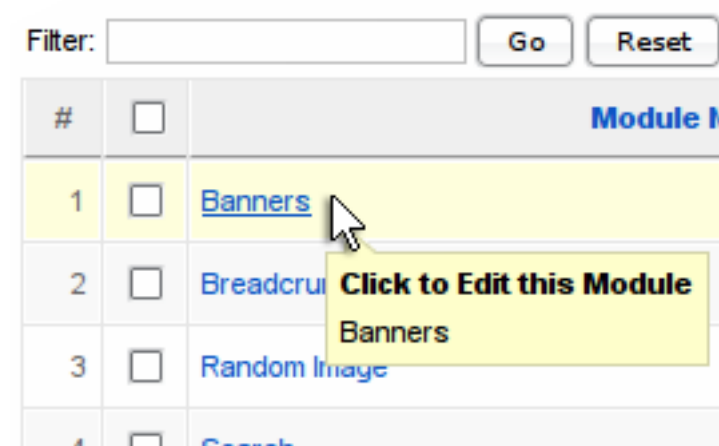
<http://www.example.com/administrator/>

Step 2



Go to the menu Extensions > Module Manager

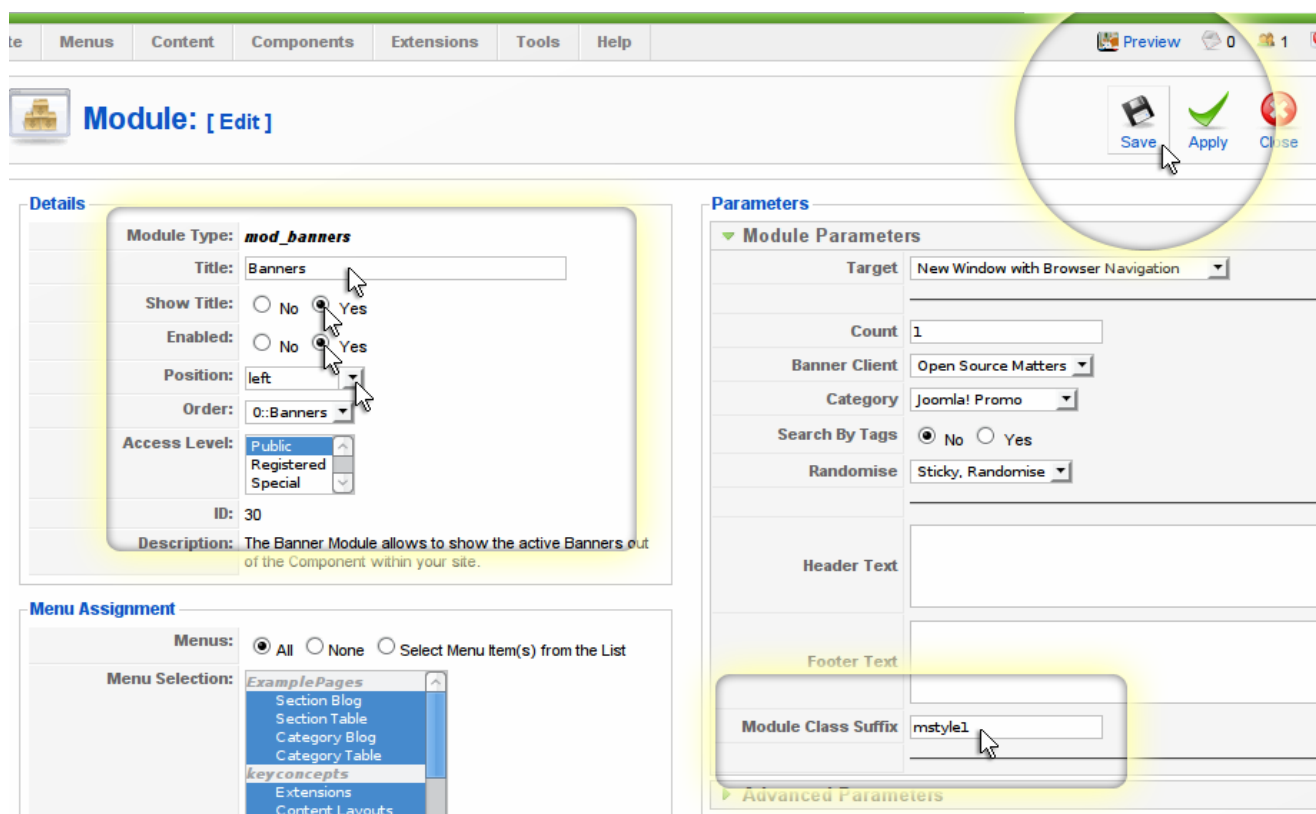
Step 3



Find the module you want to edit and click it.

Note: If you cannot find your module perhaps there are too many modules split in pages. Go through the pages to find your module, or use the filters to limit the list of modules on your screen.

Step 4



Now you are in the page that controls the module.

From the Details area you can control many features including:

- Set the title of the module
- Show or hide the title
- Publish or unpublish the module by checking the Enabled attribute
- Set the position of the module

From the Parameters area you can control other features including the ability to

- Set the Module Class Suffix

To save your changes click the Save button ton the top right corner.

Appendix C - CMenu to Joomla! content link reference

To connect CMenu with the Joomla! content create an “External Link” menu item and use the “Link” text box to enter the connection command.

The following example will display the 10 latest articles:

```
:cnt:latest:max=10
```

Commands can take parameters. Type the colon (:) symbol before each parameter. Here is an example that demonstrates how you can build a link with multiple parameters:

```
:cnt:articles:cat=1,2,3:max=10:itemid=1
```

Available commands and their parameters:

C.1. articles

Displays article links in the order set from the control panel.

sec

Valid values: Comma separated list of the section IDs.

Description: When used, only the articles under the specified sections will appear.

Default: [none]

Example:

```
:cnt:articles:sec=1,2,3
```

cat

Valid values: Comma separated list of the category IDs.

Description: When used, only the articles under the specified categories will appear.

Default: [none]

Example:

```
:cnt:articles:cat=1,2,3
```

max

Valid values: Any positive integer number.

Description: Maximum number of items to display.

Default: 10

Example:

```
:cnt:articles:max=20
```


itemid

Valid values: Any positive integer number.

Description: Sets the "Itemid" URL variable. Joomla! needs this variable in order to understand which menu item is active.

Default: [none]

Example:

```
:cnt:articles:itemid=1
```

C.2. latest

Displays article links putting the newer ones first.

sec

Valid values: Comma separated list of the section IDs.

Description: When used, only the articles under the specified sections will appear.

Default: [none]

Example:

```
:cnt:latest:sec=1,2,3
```

cat

Valid values: Comma separated list of the category IDs.

Description: When used, only the articles under the specified categories will appear.

Default: [none]

Example:

```
:cnt:latest:cat=1,2,3
```

max

Valid values: Any positive integer number.

Description: Maximum number of items to display.

Default: 10

Example:

```
:cnt:latest:max=20
```

itemid

Valid values: Any positive integer number.

Description: Sets the "Itemid" URL variable. Joomla! needs this variable in order to understand which menu item is active.

Default: [none]

Example:

```
:cnt:latest:itemid=1
```

C.3. random

Displays article links in random order.

sec

Valid values: Comma separated list of the section IDs.

Description: When used, only the articles under the specified sections will appear.

Default: [none]

Example:

```
:cnt:random:sec=1,2,3
```

cat

Valid values: Comma separated list of the category IDs.

Description: When used, only the articles under the specified categories will appear.

Default: [none]

Example:

```
:cnt:random:cat=1,2,3
```

max

Valid values: Any positive integer number.

Description: Maximum number of items to display.

Default: 10

Example:

```
:cnt:random:max=20
```

itemid

Valid values: Any positive integer number.

Description: Sets the "Itemid" URL variable. Joomla! needs this variable in order to understand which menu item is active.

Default: [none]

Example:

```
:cnt:random:itemid=1
```

C.4. selected

Displays selected article links. Use the “id” parameter to set article IDs.

id

Valid values: Comma separated list of the article IDs.

Description: Defines the IDs of the articles to be displayed.

Default: [none]

Example:

```
:cnt:selected:id=1,2,3
```

sec

Valid values: Comma separated list of the section IDs.

Description: When used, only the articles under the specified sections will appear.

Default: [none]

Example:

```
:cnt:selected:id=1,2,3:sec=1,2,3
```

cat

Valid values: Comma separated list of the category IDs.

Description: When used, only the articles under the specified categories will appear.

Default: [none]

Example:

```
:cnt:selected:id=1,2,3:cat=1,2,3
```

max

Valid values: Any positive integer number.

Description: Maximum number of items to display.

Default: 10

Example:

```
:cnt:selected:id=1,2,3:max=20
```

itemid

Valid values: Any positive integer number.

Description: Sets the “Itemid” URL variable. Joomla! needs this variable in order to understand which menu item is active.

Default: [none]

Example:

```
:cnt:selected:id=1,2,3:itemid=1
```

Appendix D - CMenu to VirtueMart 1.1 link reference

To connect CMenu with VirtueMart's data create an "External Link" menu item and use the "Link" text box to enter the connection command.

The following example will display all the product categories:

```
:vm:subcategory
```

Commands can take parameters. Type the colon (:) symbol before each parameter. Here is an example that demonstrates how you can build a link with multiple parameters:

```
:vm:subcategory:id=1:depth=1:published=1:cur_vendor=0
```

Available commands and their parameters:

D.1. category

Displays product categories and their sub-categories.

id

Valid values: Comma separated list of product category IDs.

Description: When used, only the categories with the given IDs will appear.

Default: 0

Example:

```
:vm:category:id=1,2,3
```

depth

Valid values: Zero or any positive integer number.

Description: Value 1 or larger sets the maximum level of depth of the categories to appear. Value 0 shows them all.

Default: 0

Example:

```
:vm:category:depth=1
```

published

Valid values: 1 or 0 that represent published or all.

Description: Use value 1 if you want to list only the published categories, 0 if you want to list them all.

Default: 1

Example:

```
:vm:category:published=1
```

cur_vendor

Valid values: 1 or 0 that represent current vendor only, or all vendors.

Description: Use value 1 if you want to list the categories of the current vendor only, 0 if you want to list them all.

Default: 1

Example:

```
:vm:category:cur_vendor=1
```

D.2. subcategory

Displays product sub-categories.

id

Valid values: Comma separated list of the parent category IDs.

Description: When used, only the sub-categories of the given IDs will appear.

Default: 0

Example:

```
:vm:category:id=1,2,3
```

depth

Valid values: Zero or any positive integer number.

Description: Value 1 or larger sets the maximum level of depth of the categories to appear. Value 0 shows them all.

Default: 0

Example:

```
:vm:category:depth=1
```

published

Valid values: 1 or 0 that represent published or all.

Description: Use value 1 if you want to list only the published categories, 0 if you want to list them all.

Default: 1

Example:

```
:vm:category:published=1
```

cur_vendor

Valid values: 1 or 0 that represent current vendor only, or all vendors.

Description: Use value 1 if you want to list the categories of the current vendor only, 0 if you want to list them all.

Default: 1

Example:

```
:vm:category:cur_vendor=1
```

D.3. featured

Displays featured products.

max_items

Valid values: Any positive integer number.

Description: Maximum number of items to display.

Default: 10

Example:

```
:vm:featured:max_items=20
```

cat

Valid values: Comma separated list of category IDs.

Description: When used, only the products under the given categories will appear.

Example:

```
:vm:featured:cat=1,2,3
```

cur_vendor

Valid values: 1 or 0 that represent current vendor only, or all vendors.

Description: Use value 1 if you want to list products of the current vendor only, 0 if you want to list them all.

Default: 1

Example:

```
:vm:featured:cur_vendor=1
```

D.4. latest

Displays latest added products.

max_items

Valid values: Any positive integer number.

Description: Maximum number of items to display.

Default: 10

Example:

```
:vm:latest:max_items=20
```

cat

Valid values: Comma separated list of category IDs.

Description: When used, only the products under the given categories will appear.

Example:

```
:vm:latest:cat=1,2,3
```

cur_vendor

Valid values: 1 or 0 that represent current vendor only, or all vendors.

Description: Use value 1 if you want to list products of the current vendor only, 0 if you want to list them all.

Default: 1

Example:

```
:vm:latest:cur_vendor=1
```

D.5. random

Displays randomly selected products.

max_items

Valid values: Any positive integer number.

Description: Maximum number of items to display.

Default: 10

Example:

```
:vm:random:max_items=20
```

cat

Valid values: Comma separated list of category IDs.

Description: When used, only the products under the given categories will appear.

Example:

```
:vm:random:cat=1,2,3
```

cur_vendor

Valid values: 1 or 0 that represent current vendor only, or all vendors.

Description: Use value 1 if you want to list products of the current vendor only, 0 if you want to list them all.

Default: 1

Example:

```
:vm:random:cur_vendor=1
```

D.6. selected

Displays custom selected products.

id

Valid values: Comma separated list of product IDs.

Description: ID numbers of the products you want to show.

Example:

```
:vm:selected:id=1,2,3
```

The usage of the parameter id is compulsory.

D.7. topten

Displays best selling products.

max_items

Valid values: Any positive integer number.

Description: Maximum number of items to display.

Default: 10

Example:

```
:vm:topten:max_items=20
```

cat

Valid values: Comma separated list of category IDs.

Description: When used, only the products under the given categories will appear.

Example:

```
:vm:topten:cat=1,2,3
```

cur_vendor

Valid values: 1 or 0 that represent current vendor only, or all vendors.

Description: Use value 1 if you want to list products of the current vendor only, 0 if you want to list them all.

Default: 1

Example:

```
:vm:topten:cur_vendor=1
```




bonusthemes.com

E X T R E M E J O O M L A T E M P L A T I N G

Graphics: Mediagrafix - <http://www.mediagrafix.gr>
Programming: Creative Pulse - <http://www.creativepulse.eu>

Distribution - Support: <http://www.bonusthemes.com>