

user manual



Joomla!™
Template

promote

Promote v1.0 - Manual v1.0

bonusthemes.com

EXTREME JOOMLA TEMPLATING

Table of Contents

1. Introduction	3
2. General information	3
2.1. Required software	3
2.2. Browser compatibility	3
3. Template installation	4
4. Layout	5
4.1. Template map	6
4.2. CSS structure	7
4.3. Module Suffixes	8
5.1. Logo setup	10
5.2. Banner setup	10
5.3. How to show/hide the BonusThemes logo	10
5.4. PNG fix	10
5.5. How to enable/disable CMenu	11
5.6. How to set the Joomla menu for CMenu	11
5.7. How to enable/disable the SEOCP feature	11
5.8. Hidden module positions	11
5.9. Custom menu styling	12
5.10. How to set the width of any position	12
5.11. How to connect CMenu with the Joomla! content	13
5.12. How to connect CMenu with VirtueMart 1.1	14
5.13. How to set up the article date style	15
5.14. How to set up the styling of the first word of the module titles	15
5.15. How to hide the main body area	16
5.16. How to set up the search module	16
5.17. How to set up modules in the position "top"	16
5.18. How to set up the "SMenu Position" module in the position "top"	16
Appendix A – How to install a template	18
Appendix B – How to setup a module	21
Appendix C - CMenu to Joomla! content link reference	23
C.1. articles	23
C.2. latest	24
C.3. random	25
C.4. selected	26
Appendix D - CMenu to VirtueMart 1.1 link reference	27
D.1. category	27
D.2. subcategory	28
D.3. featured	29
D.4. latest	29
D.5. random	30
D.6. selected	30
D.7. topten	31

1. Introduction

Promote is the November 2009 Joomla! template from BonusThemes.com.

Promote is a simple and elegant template for an impressive business presentation. Your imagination is your limit. You can use Promote as a basis for a variety of other content types such as gaming portals, blogs and commercial websites.

Promote brings the newer version of SMenu (Slide Menu) with one very useful addition: SMenu now takes content from plain Joomla! positions. You just publish modules in a hidden position (available in most of BonusThemes' templates) and just see them working.

The template features a 3 column layout, plenty of module positions, a menu with built-in support for VirtueMart 1.1, Joomla! articles, native or blog styled date tag for articles, content optimization settings for search engines and lots of configuration options for demanding webmasters.

Read the following sections to find detailed information and illustrated examples that explain the ways you can use the template.

2. General information

2.1. Required software

Promote works with Joomla! 1.5.x and it is recommended to use the latest version available.

Visit <http://www.joomla.org> to find which is the latest available version for Joomla!. If you are not sure which version you are using at the moment, login to the administrator control panel and locate the version number on the top right corner of the page.

2.2. Browser compatibility

Promote is compatible with:

- Firefox 3.5
- Safari 4
- Chrome 4
- MS Internet Explorer 8
- MS Internet Explorer 7
- MS Internet Explorer 6

3. *Template installation*

To install the template you can use the Joomla! installation mechanism:

`Extensions > Install/Uninstall`

Alternatively, you may unpack the template in the /template directory.

To activate the template go to

`Extensions > Template Manager`

select the template and click the “Default” button.

Read Appendix A for illustrated examples on how to install and activate a template.

4. Layout

The layout of Promote provides 26 regular module positions and 5 invisible positions for supplementary services.

Promote implements a technology that makes it really easy to set the width of any position or the main body. Read section 5.10 for more information.

This template uses a collapsible module technology. That makes some positions disappear if there are no published modules in them. This feature gives you the capability to make arrangements for wider space in your pages.

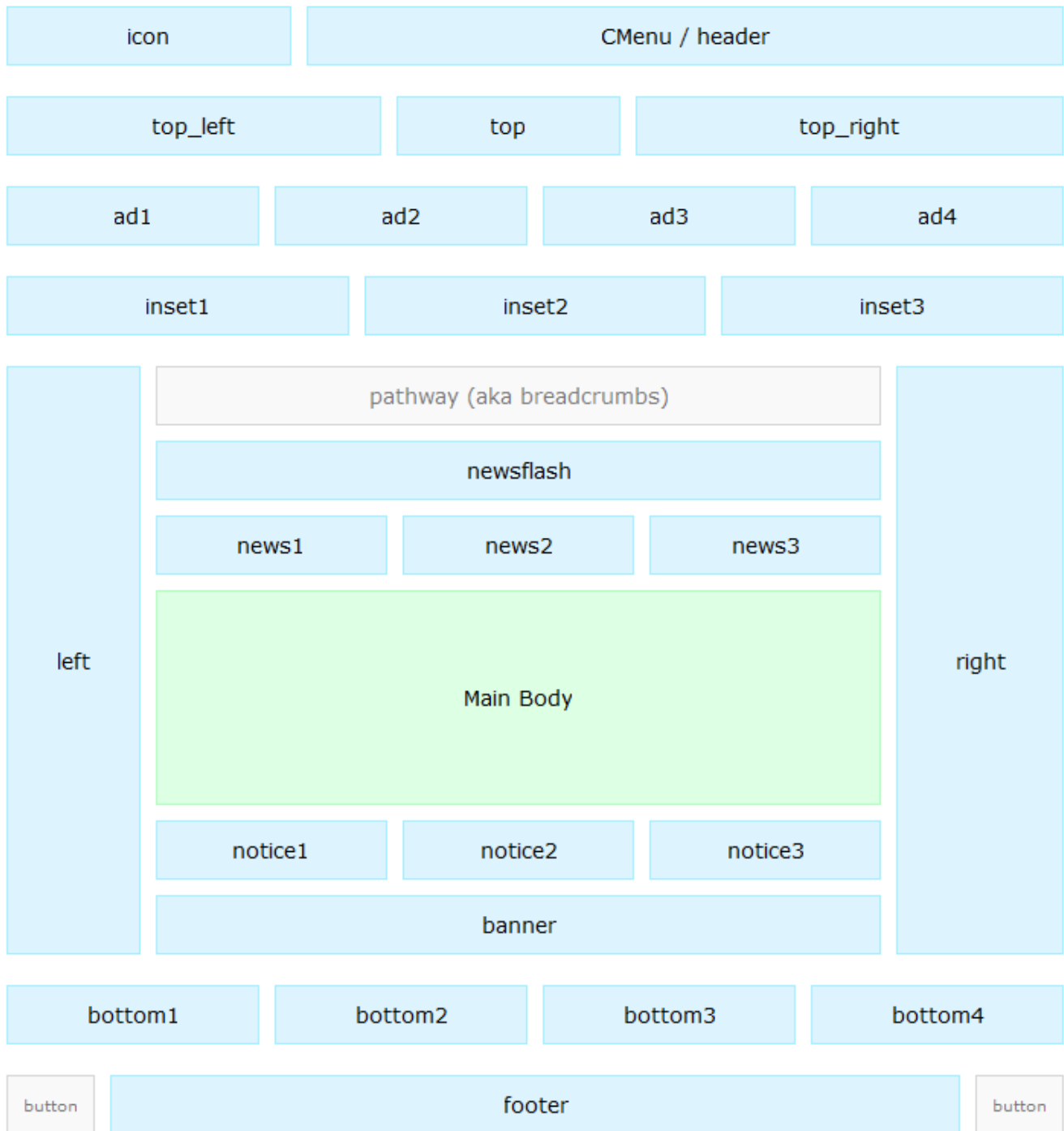
On the top of its layout, Promote uses CMenu, a menu script that uses a regular Joomla menu as a data source. You have the option of disabling this menu and have a regular module position in its place. This can be set from the Template Manager and the name of the position that replaces CMenu is “header”. Read sections 5.5 and 5.6 for more information.

CMenu can also be easily connected with articles from the Joomla! content and VirtueMart’s products and categories. Read section 5.11 and Appendix C and for more details on the connection to Joomla! content and section 5.12 and Appendix D for the connection to VirtueMart 1.1.

With this template you have the option to change the way dates for articles appear and give them blog styled date tags. Read section 5.13 for more information.

Promote by default differentiates the styling of the first word of your module titles. Read section 5.14 to see how to control this feature.

4.1. Template map



Map of regular module positions for the template Promote.

Promote also supports 5 hidden positions for supplementary services. Read section 5.8 for more information.

An alternative way to see this map on your website is to use the URI parameter `tp=1`. For example, if your website is "example.com" you can see the template positions by typing <http://www.example.com/?tp=1>

4.2. CSS structure

Promote uses the main Joomla template CSS file for typography and other general styling. That main file is `/templates/bt_promote/css/template.css`

The file `/templates/bt_promote/css/layout.css` contains CSS definitions that control the layout.

The file `/templates/bt_promote/css/cmenu.css` contains CSS definitions that control the layout of CMenu, the script for the menu on the top area.

The file `/templates/bt_promote/css/table_viewer.css` contains CSS definitions for the “Table” viewer of the photo gallery component Photo Spot.

Naming system for module positions:

The IDs of the `<div>` tags that wrap the template positions always start with “pos_”. For example the module position “left” takes the id “pos_left”.

4.3. Module Suffixes

There are 6 module styles (or module suffixes) that match the styling of the template.

Sample Title

Lorem ipsum dolor sit amet, consectetur adipiscing elit, sed do eiusmod tempor incididunt ut labore et dolore magna aliqua. Ut enim ad minim veniam, quis nostrud.

mstyle1

This mstyle adds a top padding. It is designed for the modules in the position “top”

Sample Title

Lorem ipsum dolor sit amet, consectetur adipiscing elit, sed do eiusmod tempor incididunt ut labore et dolore magna aliqua. Ut enim ad minim veniam, quis

mstyle2

Use it for modules in positions “top_left” and “top_right”

Sample Title

Lorem ipsum dolor sit amet, consectetur adipiscing elit, sed do eiusmod tempor incididunt ut labore et dolore magna aliqua. Ut enim ad minim veniam, quis nostrud.

mstyle3

Use it for modules in positions “ad1”, “ad2”, “ad3” and “ad4”



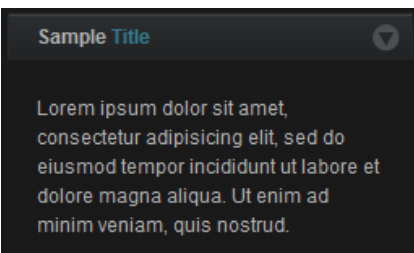
Lorem ipsum dolor sit amet,
consectetur adipisicing elit, sed do
eiusmod tempor incididunt ut labore et
dolore magna aliqua. Ut enim ad
minim veniam, quis nostrud.

mstyle4



Lorem ipsum dolor sit amet,
consectetur adipisicing elit, sed do
eiusmod tempor incididunt ut labore et
dolore magna aliqua. Ut enim ad
minim veniam, quis nostrud.

mstyle5



mstyle6

Use it for modules in positions "bottom1", "bottom2",
"bottom3" and "bottom4"

5. Template setup

5.1. Logo setup

To setup your logo, publish a “Custom HTML” module with an uploaded image in any template position.

Example:

1. Upload your logo on your website
2. Create a new “Custom HTML” module that contains the URL of the image you just uploaded
3. Publish that module in a suitable position

For additional help with illustrated examples, visit <http://www.bonusthemes.com> and open the tutorial “How to upload your logo” from the tutorials section.

You can publish your logo in any position, but the recommended one for logos is “icon”.

5.2. Banner setup

To setup a banner, publish a banner module in any template position.

5.3. How to show/hide the BonusThemes logo

You can show or hide the BonusThemes logo from

`Extensions > Template Manger`

5.4. PNG fix

MS Internet Explorer 5 and 6 have trouble rendering the alpha levels (transparencies) of PNG images. The template is equipped with a script that fixes this problem. To enable transparencies in PNG files for MS Internet Explorer 5 and 6, use the CSS class “pngfix”. In some cases images appear distorted. To avoid this distortion provide “width” and “height” attributes in your HTML tags. Alternatively, you can try the CSS class “pngfix_static”.

HTML example that shows an image tag with pngfix enabled:

```

```

PNG fix’s website:

<http://www.twinhelix.com>

5.5. How to enable/disable CMenu

CMenu (Classic Menu) is the menu that appears on the top of the page.

If you want to use a module instead of CMenu you can disable it from

`Extensions > Template Manger`

locate the option “Header Menu Type” and set it to “Position Header”. You can now publish your module in the position “header”.

5.6. How to set the Joomla menu for CMenu

CMenu by default shows the contents of the Joomla menu “topmenu”.

In order to change the source of CMenu, go to

`Extensions > Template Manager`

and use the option “Header Menu Name”.

5.7. How to enable/disable the SEOCP feature

SEOCP (Search Engine Optimization Content Positioning) is a feature that controls the position of the main content of the pages.

When SEOCP is enabled the content is internally positioned on the top of the HTML code and this helps search engines find and analyze the content easier. When the page loads, a JavaScript script moves the content to the proper position so that the visual structures can display it in the way the human eye can understand better.

SEOCP needs JavaScript to work. This means that users with JavaScript disabled will not be able to read the content of the page.

By default, SEOCP is disabled. To enable SEOCP go to

`Extensions > Template Manager`

and use the option “SEOCP”.

5.8. Hidden module positions

Promote features 5 hidden positions for supplementary functionality. The names of these positions are “aux1”, “aux2”, “aux3”, “aux4”, “aux5”.

The IDs of the container HTML elements for these positions are “pos_aux1”, “pos_aux2”, “pos_aux3”, “pos_aux4” and “pos_aux5” respectively.

5.9. Custom menu styling

The Promote template has a default way of laying out menus. It uses a specific set of CSS rules that may not appear nice in exception cases. One such exception is a horizontal menu.

To make the template ignore the default layout for menus you can use a custom “Menu Class Suffix”. This should not be confused with “Module Class Suffix”. From the administrator’s control panel go to

`Extensions > Module Manager`

open the menu module that needs to have a different layout, open the “Advanced Parameters” panel on the right side of the page and set the “Menu Class Suffix” to any value (type for example “mystyle”) and click the “Save” button.

Promote also contains a secondary styling for menus in the white area of the main body. To use it follow the instructions above and type “menu1” in the “Menu Class Suffix” input box.

5.10. How to set the width of any position

To set the width of a module position in the template go to

`Extensions > Template Manager`

click the `bt_promote` template and use the “Position widths” text box.

You can simply type the name of the template, a colon (:) and a width in pixels. Each line should have one setting.

Example:

```
left: 160
```

```
right: 200
```

To set the width of the main body use the keyword: “mainbody”.

Example:

```
mainbody: 700
```

5.11. How to connect CMenu with the Joomla! content

CMenu is the menu that appears by default as the main template menu. As explained in previous sections its data source is a regular Joomla! menu of your choice.

The connection of CMenu with the Joomla! content is a very simple task. All you have to do is create an "External Link" menu item and use the "Link" text box to define the type of connection you want. The system will convert your link to the Joomla! content if it starts with ":cnt:". After that keyword, you should enter a type of connection and optional parameters.



Here is an example of what the Link should look like if you want to show links from all the Joomla! content under a menu item:

```
:cnt:articles
```

Now let's narrow the results to show links of articles in a specified category. Let's pick the category with ID 1 for our example.

```
:cnt:articles:cat=1
```

Depending on the command you use ("articles" in this case) you have optional parameters to filter your connection. For example, you may want to show a maximum of 20 links. To do that, you should use the parameter "max":

```
:cnt:articles:cat=1:max=20
```

The colon (:) symbol is a delimiter for your parameters. If you want to use parameters, you should separate them with a colon (:).

Here is a list with all the available commands:

- articles: Displays article links in the order set from the control panel.
- latest: Displays article links putting the newer ones first.
- random: Displays article links in random order.
- selected: Displays selected article links.

Read Appendix C for a detailed reference on the commands and their parameters.

Menu item that links to another web site.

Item Details

Title:	Articles
Alias:	
Link:	:cnt:articles:cat=1
Display in:	Top Menu <input type="button" value="v"/>
Parent Item:	<div>Top</div> <div>About Joomla!</div> <div>Features</div> <div>- test 1</div> <div>- test 222 dskfi sdalfi sdlfisda</div>

5.12. How to connect CMenu with VirtueMart 1.1

CMenu may also use VirtueMart as a data source for menu items.

The connection of CMenu with VirtueMart 1.1 is as easy as the connection to the Joomla! content explained in the previous section. All you have to do is create an "External Link" menu item and use the "Link" text box to define the type of connection you want. The system will convert your link to VirtueMart data if it starts with "vm:". After that keyword, you should enter a type of connection and optional parameters.



Here is an example of what the Link should look like if you want to show all the VirtueMart categories under a menu item:

```
:vm:subcategory
```

And here is a more complex example that connects a menu item with the sub-categories of the category 5.

```
:vm:subcategory:id=5
```

Depending on the command you use ("category" in this case) you have optional parameters to filter your connection. For example, you may want to show only one level of sub-categories. To do that, you should use the parameter "depth":

```
:vm:subcategory:id=5:depth=1
```

The colon (:) symbol is a delimiter for your parameters. If you want to use parameters, you should separate them with a colon (:).

Here is a list with all the available commands:

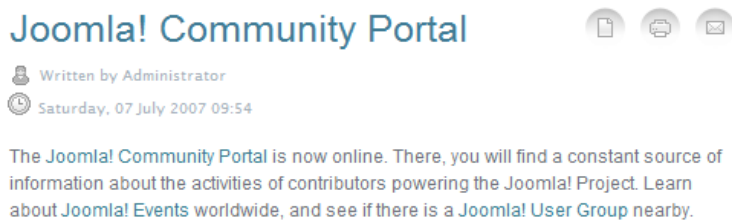
- category: Displays VirtueMart product categories and their sub-categories.
- subcategory: Displays VirtueMart sub-categories.
- featured: Displays featured products.
- latest: Displays latest products.
- random: Displays random products.
- selected: Displays selected products.
- topten: Displays best selling products.

Read Appendix D for a detailed reference on the commands and their parameters.

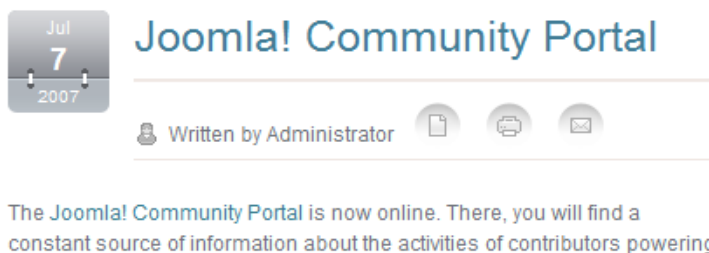
5.13. How to set up the article date style

Promote provides two ways to display dates for articles:

Native



Blog



To set the article date style of the template go to

`Extensions > Template Manager`

click the `bt_promote` template and use the “Article Date Style” drop down box.

5.14. How to set up the styling of the first word of the module titles

With the Promote template you can make the template set a differentiated styling for the first word of a module’s title.

To control this functionality go to

`Extensions > Template Manager`

click the `bt_promote` template and use the “Module word” buttons to enable or disable it.

5.15. How to hide the main body area

With Promote you can hide the entire area of the main body.

To do that, download and install the component “com_nb” (short for COMponent No Body). You can download this component from the Downloads Area of the BonusThemes.com website.

Assign “com_nb” to the menu items you want the main body area to be hidden.

5.16. How to set up the search module

The search module in Promote can be placed in any position.

If you want to put it in positions “top_left” or “top_right” set its module suffix parameter to “mstyle2”.

5.17. How to set up modules in the position “top”

The position “top” is designed not to have top or bottom paddings. In the original design this position works very well with the module SMenu. The next section has more information about this module.

If you want to use modules that require padding, set the module suffix parameter of your modules to “mstyle1”.

5.18. How to set up the “SMenu Position” module in the position “top”

SMenu (Sliding Menu) is a separate module from the template. You can download it from the “Joomla! Addons” section from the Download Area of our website.

In order to set up this module you need to follow the instructions of its user’s manual.

To replicate the module setup of Promote’s demo website you must install SMenu Position and set the following values to the module parameters:

“Details” information box:

Show Title:	No
Enabled:	Yes
Position:	top

“Module Parameters” information box:

Position name:	pos_aux1
Width (in pixels):	730
Height (in pixels):	418
Orientation:	Horizontal

Movement type:	Plastic
Animation type:	Fast >> Slow
Alignment:	Start
Module Class Suffix:	
Speed	15
Interval (in milliseconds):	20
Default item:	2
Min item size (in pixels):	0
Large item size (in pixels):	
Padding (in pixels):	10
Permanent selection:	Yes
Start image:	list
Start CSS class:	list
Splitter image:	images/smenu
Splitter CSS class:	smenu_header
End image:	
End CSS class:	
Splitter type:	Header on start of items
Min step (in pixels):	
Max step (in pixels):	
CSS class - Inner - Normal:	smenu_inner_norm
CSS class - Inner - Selected:	smenu_inner_sel
CSS class - Outer - Normal:	smenu_outer_norm
CSS class - Outer - Selected:	smenu_outer_sel

The panels of SMenu will show the content of modules you publish in the position "aux1". If you want to use another hidden position (aux2, aux3 etc), adjust the "Position name" to "pos_aux2", "pos_aux3" etc.

Each panel has a header image on its left side. Use your favorite graphics tool to create your header images and upload them to /images/smenu. If you want to use a different directory, adjust the value of "Splitter image". The extensions of your splitter images can be: "jpg", "jpeg", "gif" and "png". The images will be sorted in alphabetical order so make sure the names are sorted properly. In case you have 10 or more splitter images add a 0 before their number so that the alphabetical order can work properly. For example: "tab01.gif", "tab02.gif" etc.

Appendix A – How to install a template

To install a template in Joomla! 1.5.x follow the next 6 steps:

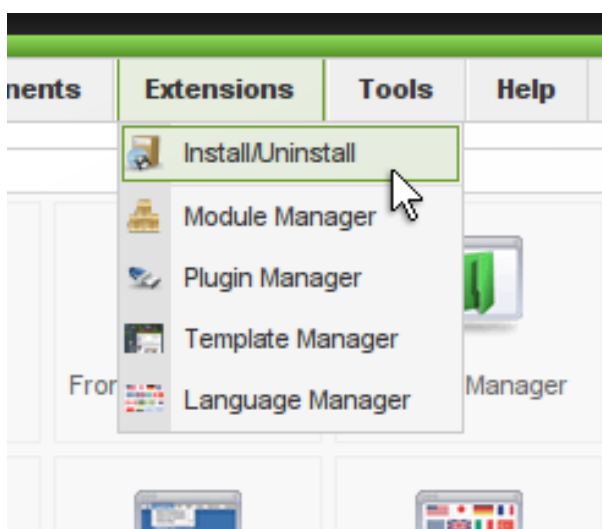
Step 1

Get into the administrator's control panel with your browser.

The URL usually looks like

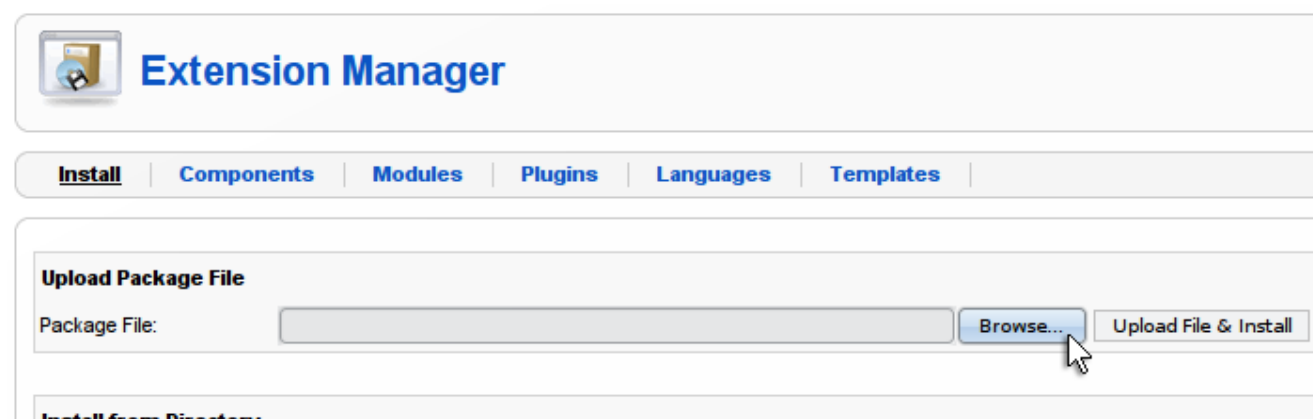
<http://www.example.com/administrator/>

Step 2



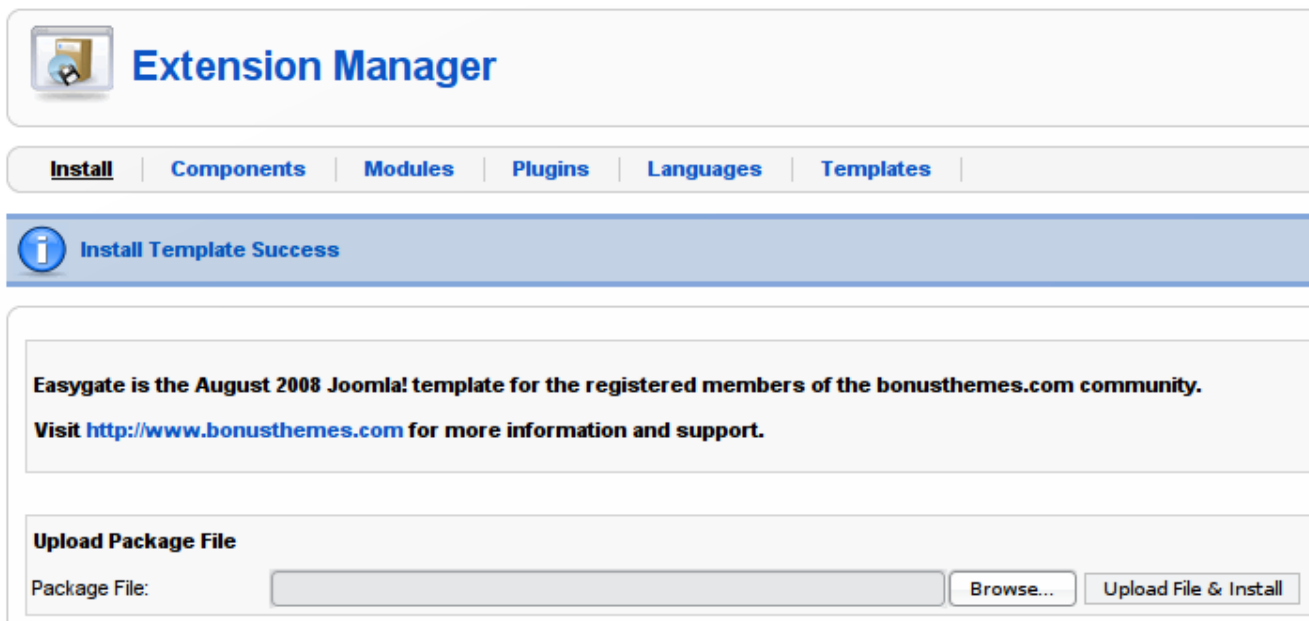
Go to the menu `Extensions > Install/Uninstall`

Step 3



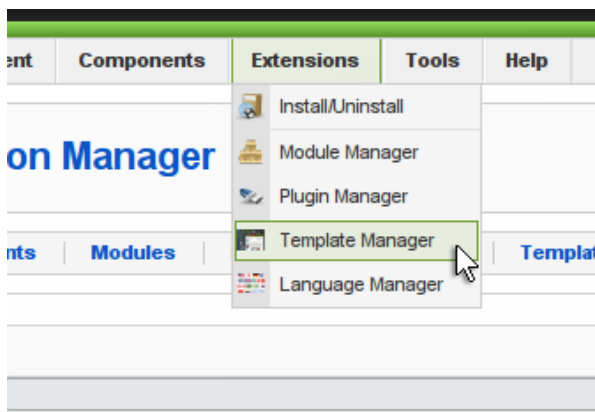
Click the Browse button to find the archive of the template, and then click Upload File & Install to perform the installation procedure.

Step 4



If the installation was successful you will be able to see a success message like the one in the image.

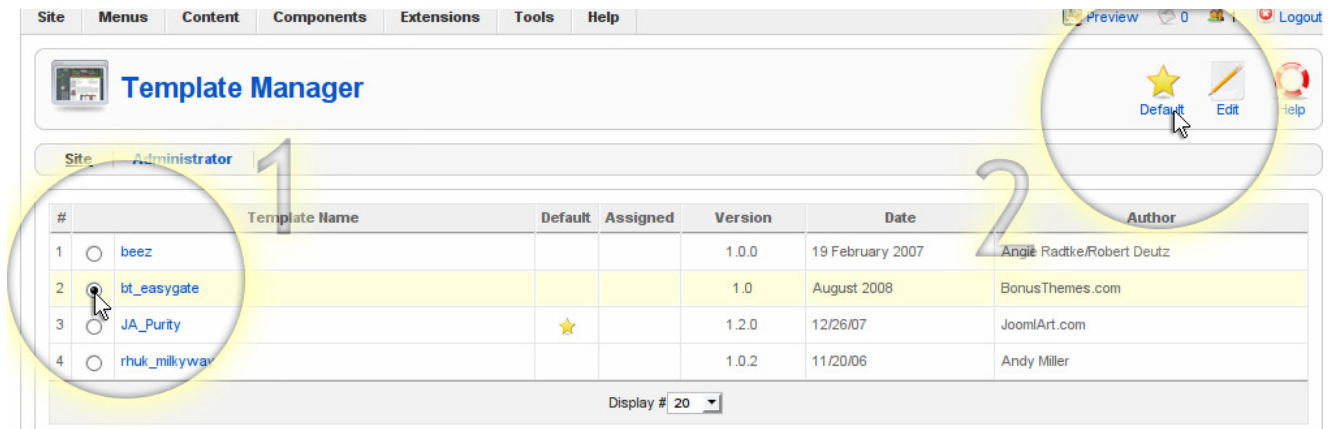
Step 5



The next thing to do is to activate the template.

Go to `Extensions > Template Manager`

Step 6



The screenshot shows the Joomla! Template Manager interface. The top navigation bar includes links for Site, Menus, Content, Components, Extensions, Tools, and Help. The main heading is 'Template Manager'. Below it, there's a sub-header 'Site Administrator'. The table lists installed templates:

#	Template Name	Default	Assigned	Version	Date	Author
1	beez			1.0.0	19 February 2007	Angie Radtke/Robert Deutz
2	bt_easygate			1.0	August 2008	BonusThemes.com
3	JA_Purity	★		1.2.0	12/26/07	JoomlArt.com
4	rhuk_milkyway			1.0.2	11/20/06	Andy Miller

At the bottom right of the table, there is a 'Display #' dropdown menu set to '20'.

From the Template Manager page click on the template name you just installed and then click the Default button to make that template the default one.

Appendix B – How to setup a module

To setup a module in Joomla! 1.5.x follow the next 4 steps:

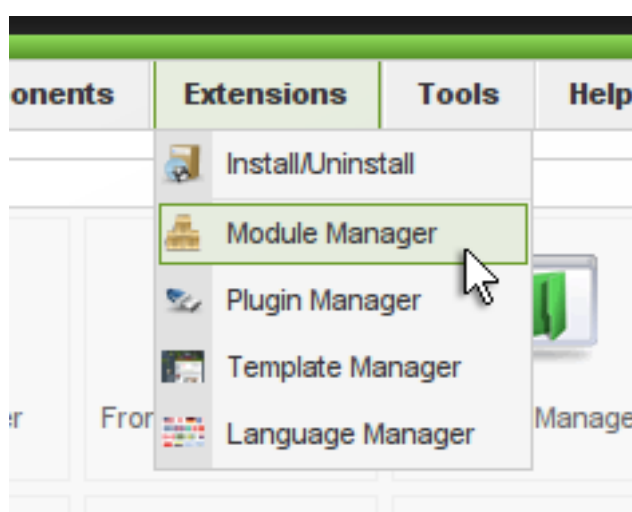
Step 1

Get into the administrator's control panel with your browser.

The URL usually looks like

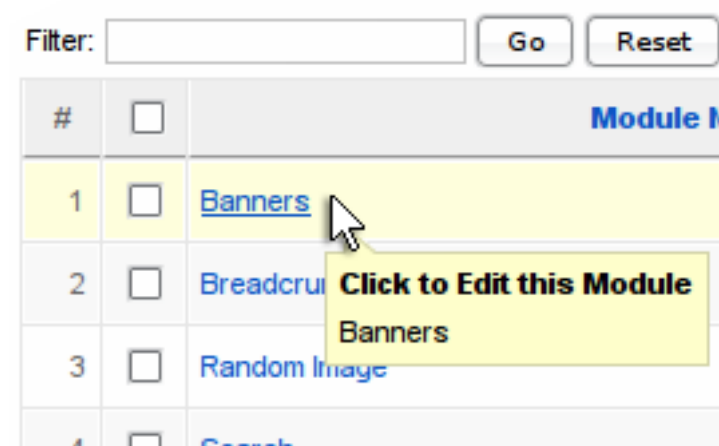
<http://www.example.com/administrator/>

Step 2



Go to the menu Extensions > Module Manager

Step 3



Find the module you want to edit and click it.

Note: If you cannot find your module perhaps there are too many modules split in pages. Go through the pages to find your module, or use the filters to limit the list of modules on your screen.

Step 4

The screenshot shows the Joomla! Module Manager interface for editing a module. The top navigation bar includes links for Menu, Content, Components, Extensions, Tools, and Help. The main heading is "Module: [Edit]".

Details Section:

- Module Type: **mod_banners**
- Title: Banners
- Show Title: ☐ No ☒ Yes
- Enabled: ☐ No ☒ Yes
- Position: left
- Order: 0::Banners
- Access Level: Public (Selected), Registered, Special
- ID: 30
- Description: The Banner Module allows to show the active Banners out of the Component within your site.

Parameters Section:

- Target: New Window with Browser Navigation
- Count: 1
- Banner Client: Open Source Matters
- Category: Joomla! Promo
- Search By Tags: ☒ No ☐ Yes
- Randomise: Sticky, Randomise
- Header Text: (Empty field)
- Footer Text: (Empty field)
- Module Class Suffix: mstyle1
- Advanced Parameters: (Expandable section)

At the top right, there are buttons for Preview, Save, Apply, and Close. A yellow circle highlights these buttons. A yellow box highlights the "Module Class Suffix" field in the Parameters section.

Now you are in the page that controls the module.

From the Details area you can control many features including:

- Set the title of the module
- Show or hide the title
- Publish or unpublish the module by checking the Enabled attribute
- Set the position of the module

From the Parameters area you can control other features including the ability to

- Set the Module Class Suffix

To save your changes click the Save button ton the top right corner.

Appendix C - CMenu to Joomla! content link reference

To connect CMenu with the Joomla! content create an “External Link” menu item and use the “Link” text box to enter the connection command.

The following example will display the 10 latest articles:

```
:cnt:latest:max=10
```

Commands can take parameters. Type the colon (:) symbol before each parameter. Here is an example that demonstrates how you can build a link with multiple parameters:

```
:cnt:articles:cat=1,2,3:max=10:itemid=1
```

Available commands and their parameters:

C.1. articles

Displays article links in the order set from the control panel.

sec

Valid values: Comma separated list of the section IDs.

Description: When used, only the articles under the specified sections will appear.

Default: [none]

Example:

```
:cnt:articles:sec=1,2,3
```

cat

Valid values: Comma separated list of the category IDs.

Description: When used, only the articles under the specified categories will appear.

Default: [none]

Example:

```
:cnt:articles:cat=1,2,3
```

max

Valid values: Any positive integer number.

Description: Maximum number of items to display.

Default: 10

Example:

```
:cnt:articles:max=20
```

itemid

Valid values: Any positive integer number.

Description: Sets the “Itemid” URL variable. Joomla! needs this variable in order to understand which menu item is active.

Default: [none]

Example:

```
:cnt:articles:itemid=1
```

C.2. latest

Displays article links putting the newer ones first.

sec

Valid values: Comma separated list of the section IDs.

Description: When used, only the articles under the specified sections will appear.

Default: [none]

Example:

```
:cnt:latest:sec=1,2,3
```

cat

Valid values: Comma separated list of the category IDs.

Description: When used, only the articles under the specified categories will appear.

Default: [none]

Example:

```
:cnt:latest:cat=1,2,3
```

max

Valid values: Any positive integer number.

Description: Maximum number of items to display.

Default: 10

Example:

```
:cnt:latest:max=20
```

itemid

Valid values: Any positive integer number.

Description: Sets the “Itemid” URL variable. Joomla! needs this variable in order to understand which menu item is active.

Default: [none]

Example:

```
:cnt:latest:itemid=1
```


C.3. random

Displays article links in random order.

sec

Valid values: Comma separated list of the section IDs.

Description: When used, only the articles under the specified sections will appear.

Default: [none]

Example:

```
:cnt:random:sec=1,2,3
```

cat

Valid values: Comma separated list of the category IDs.

Description: When used, only the articles under the specified categories will appear.

Default: [none]

Example:

```
:cnt:random:cat=1,2,3
```

max

Valid values: Any positive integer number.

Description: Maximum number of items to display.

Default: 10

Example:

```
:cnt:random:max=20
```

itemid

Valid values: Any positive integer number.

Description: Sets the "Itemid" URL variable. Joomla! needs this variable in order to understand which menu item is active.

Default: [none]

Example:

```
:cnt:random:itemid=1
```

C.4. selected

Displays selected article links. Use the “id” parameter to set article IDs.

id

Valid values: Comma separated list of the article IDs.

Description: Defines the IDs of the articles to be displayed.

Default: [none]

Example:

```
:cnt:selected:id=1,2,3
```

sec

Valid values: Comma separated list of the section IDs.

Description: When used, only the articles under the specified sections will appear.

Default: [none]

Example:

```
:cnt:selected:id=1,2,3:sec=1,2,3
```

cat

Valid values: Comma separated list of the category IDs.

Description: When used, only the articles under the specified categories will appear.

Default: [none]

Example:

```
:cnt:selected:id=1,2,3:cat=1,2,3
```

max

Valid values: Any positive integer number.

Description: Maximum number of items to display.

Default: 10

Example:

```
:cnt:selected:id=1,2,3:max=20
```

itemid

Valid values: Any positive integer number.

Description: Sets the “Itemid” URL variable. Joomla! needs this variable in order to understand which menu item is active.

Default: [none]

Example:

```
:cnt:selected:id=1,2,3:itemid=1
```

Appendix D - CMenu to VirtueMart 1.1 link reference

To connect CMenu with VirtueMart's data create an "External Link" menu item and use the "Link" text box to enter the connection command.

The following example will display all the product categories:

```
:vm:subcategory
```

Commands can take parameters. Type the colon (:) symbol before each parameter. Here is an example that demonstrates how you can build a link with multiple parameters:

```
:vm:subcategory:id=1:depth=1:published=1:cur_vendor=0
```

Available commands and their parameters:

D.1. category

Displays product categories and their sub-categories.

id

Valid values: Comma separated list of product category IDs.

Description: When used, only the categories with the given IDs will appear.

Default: 0

Example:

```
:vm:category:id=1,2,3
```

depth

Valid values: Zero or any positive integer number.

Description: Value 1 or larger sets the maximum level of depth of the categories to appear. Value 0 shows them all.

Default: 0

Example:

```
:vm:category:depth=1
```

published

Valid values: 1 or 0 that represent published or all.

Description: Use value 1 if you want to list only the published categories, 0 if you want to list them all.

Default: 1

Example:

```
:vm:category:published=1
```

cur_vendor

Valid values: 1 or 0 that represent current vendor only, or all vendors.

Description: Use value 1 if you want to list the categories of the current vendor only, 0 if you want to list them all.

Default: 1

Example:

```
:vm:category:cur_vendor=1
```

D.2. subcategory

Displays product sub-categories.

id

Valid values: Comma separated list of the parent category IDs.

Description: When used, only the sub-categories of the given IDs will appear.

Default: 0

Example:

```
:vm:category:id=1,2,3
```

depth

Valid values: Zero or any positive integer number.

Description: Value 1 or larger sets the maximum level of depth of the categories to appear. Value 0 shows them all.

Default: 0

Example:

```
:vm:category:depth=1
```

published

Valid values: 1 or 0 that represent published or all.

Description: Use value 1 if you want to list only the published categories, 0 if you want to list them all.

Default: 1

Example:

```
:vm:category:published=1
```

cur_vendor

Valid values: 1 or 0 that represent current vendor only, or all vendors.

Description: Use value 1 if you want to list the categories of the current vendor only, 0 if you want to list them all.

Default: 1

Example:

```
:vm:category:cur_vendor=1
```

D.3. featured

Displays featured products.

max_items

Valid values: Any positive integer number.

Description: Maximum number of items to display.

Default: 10

Example:

```
:vm:featured:max_items=20
```

cat

Valid values: Comma separated list of category IDs.

Description: When used, only the products under the given categories will appear.

Example:

```
:vm:featured:cat=1,2,3
```

cur_vendor

Valid values: 1 or 0 that represent current vendor only, or all vendors.

Description: Use value 1 if you want to list products of the current vendor only, 0 if you want to list them all.

Default: 1

Example:

```
:vm:featured:cur_vendor=1
```

D.4. latest

Displays latest added products.

max_items

Valid values: Any positive integer number.

Description: Maximum number of items to display.

Default: 10

Example:

```
:vm:latest:max_items=20
```

cat

Valid values: Comma separated list of category IDs.

Description: When used, only the products under the given categories will appear.

Example:

```
:vm:latest:cat=1,2,3
```

cur_vendor

Valid values: 1 or 0 that represent current vendor only, or all vendors.

Description: Use value 1 if you want to list products of the current vendor only, 0 if you want to list them all.

Default: 1

Example:

```
:vm:latest:cur_vendor=1
```

D.5. random

Displays randomly selected products.

max_items

Valid values: Any positive integer number.

Description: Maximum number of items to display.

Default: 10

Example:

```
:vm:random:max_items=20
```

cat

Valid values: Comma separated list of category IDs.

Description: When used, only the products under the given categories will appear.

Example:

```
:vm:random:cat=1,2,3
```

cur_vendor

Valid values: 1 or 0 that represent current vendor only, or all vendors.

Description: Use value 1 if you want to list products of the current vendor only, 0 if you want to list them all.

Default: 1

Example:

```
:vm:random:cur_vendor=1
```

D.6. selected

Displays custom selected products.

id

Valid values: Comma separated list of product IDs.

Description: ID numbers of the products you want to show.

Example:

```
:vm:selected:id=1,2,3
```

The usage of the parameter id is compulsory.

D.7. topten

Displays best selling products.

max_items

Valid values: Any positive integer number.

Description: Maximum number of items to display.

Default: 10

Example:

```
:vm:topten:max_items=20
```

cat

Valid values: Comma separated list of category IDs.

Description: When used, only the products under the given categories will appear.

Example:

```
:vm:topten:cat=1,2,3
```

cur_vendor

Valid values: 1 or 0 that represent current vendor only, or all vendors.

Description: Use value 1 if you want to list products of the current vendor only, 0 if you want to list them all.

Default: 1

Example:

```
:vm:topten:cur_vendor=1
```



bonusthemes.com

E X T R E M E J O O M L A T E M P L A T I N G

Graphics: Mediagrafix - <http://www.mediagrafix.gr>
Programming: Creative Pulse - <http://www.creativepulse.eu>

Distribution - Support: <http://www.bonusthemes.com>